



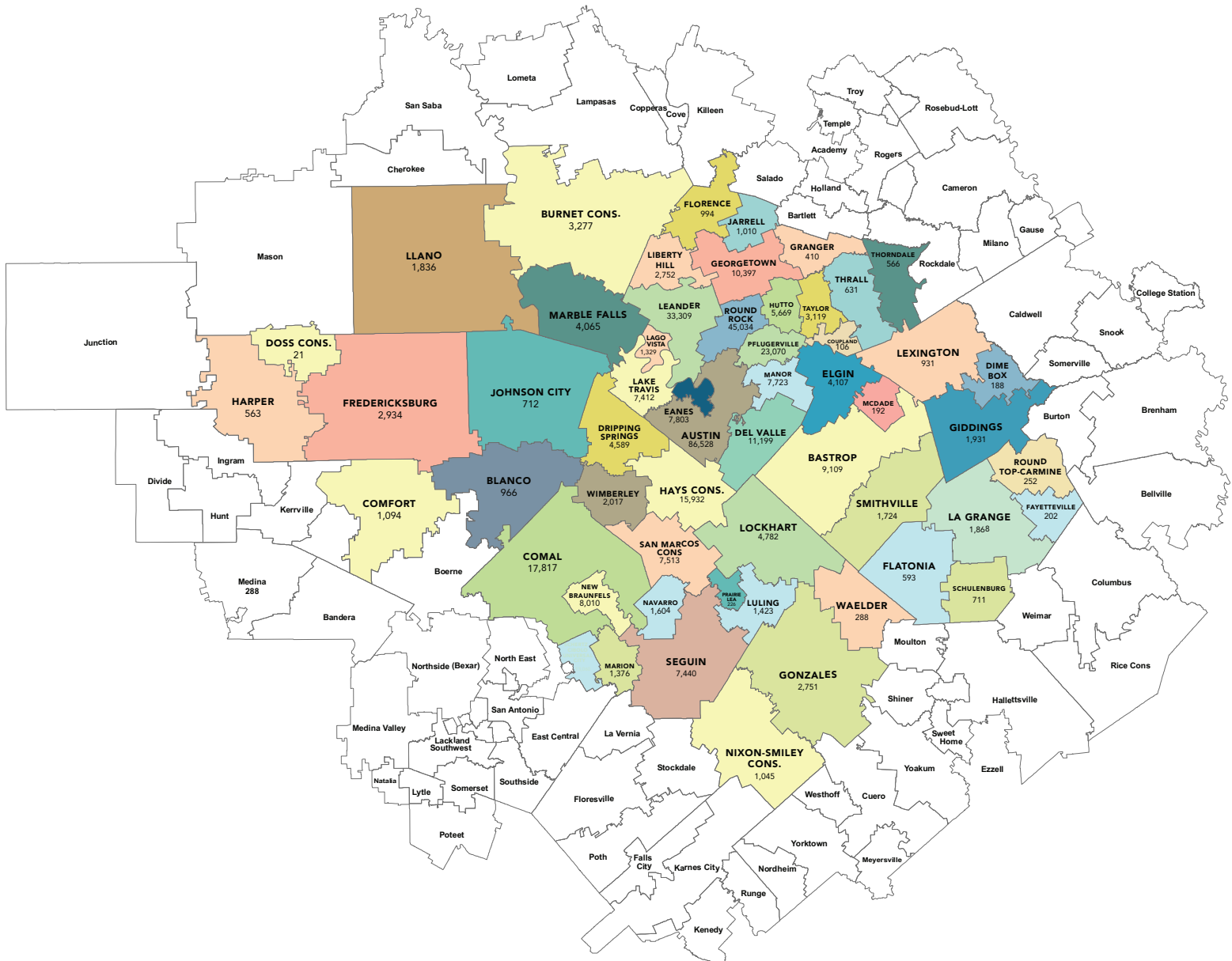
# 2018 - 2019

# PUBLIC SCHOOLS

Private Schools and Higher Education

# Region 13

## School District Boundaries





# Overview of the 2018 State Accountability System

## Student Achievement

### All Students

#### STAAR

- Combined over all subject areas evaluated (reading, mathematics, writing, science, and social studies)
- Credit awarded for Approaches Grade Level or above, Meets Grade Level or above, and Masters Grade Level on
  - STAAR\* (with and without accommodations) in grades 3–8 (including Spanish versions where applicable);
  - EOC assessments (with and without accommodations); and
  - STAAR Alternate 2 at Level II Satisfactory and Level III Accomplished standards.

#### College, Career, and Military Readiness

Percentage of annual graduates that accomplish any one of the following:

- Meet TSI criteria in ELA/reading and mathematics on assessments or college prep courses
- Meet AP/IB criteria
- Earn dual-course credits
- Enlist in the U.S. Armed Forces
- Earn an approved industry-based certification
- Earn an associate's degree while in high school
- Graduate with completed IEP and workforce readiness
- Complete CTE coherent sequence coursework and earn credit aligned with approved industry-based certifications (one-half point credit)

#### Graduation Rate

Four-year, five-year, or six-year graduation rate (or annual dropout rate if no graduation rate)

#### Domain Score

For elementary and middle schools, the Student Achievement domain score is based solely on the STAAR component. For districts and high schools, the three components are weighted 40%-40%-20%, respectively.

## School Progress

### All Students

#### Part A: Academic Growth

Credit awarded for students who improve performance year over year as measured by STAAR progress measures and performance levels on STAAR\* reading and mathematics.

#### Part B: Relative Performance

Credit awarded based on performance relative to similar districts or campuses.

#### Domain Score

The School Progress domain score is the better of Part A: Academic Growth or Part B: Relative Performance.

## Closing the Gaps

### All Students and Disaggregated Student Groups

Student performance disaggregated by the following:

- All students
- Race/ethnicity
- Economically disadvantaged status
- Current special education
- Former special education
- Current and monitored English learners
- Continuously enrolled
- Non-continuously enrolled

#### Components

- Academic Achievement
- Federal Graduation or Growth Status
- English Language Proficiency
- School Quality or Student Success

#### Domain Score

Credit awarded based on weighted performance of student groups against annual targets.

The Closing the Gaps domain score is based on the four components weighted according to district or campus type.

\*STAAR results from EL students in their first year in U.S. schools are excluded from accountability calculations. STAAR Alternate 2 results are included without regard to number of years in U.S. schools.

Better of either **Student Achievement** or **School Progress** domain = **70%** of overall rating

**30%** of overall rating

**Distinction designations** are awarded to campuses in ELA/reading, mathematics, science, social studies, Academic Growth, and Closing the Gaps. Distinction designations are awarded to campuses and districts in Postsecondary Readiness. Campuses must be rated *Met Standard* overall to be eligible for distinction designations. Districts rated *F* overall and alternative education accountability campuses are not eligible for distinction designations.

# There are more than 8,600 public schools in Texas.

How do you know how your child's school is doing compared to others in the state?

## Texas Education Agency Accountability Rating System

Every school gets one of two ratings: **MET STANDARD** or **IMPROVEMENT REQUIRED**.

The Texas Education Agency looks at four areas in determining a school or district's accountability rating:

### Student Achievement



STAAR test scores  
for the year

### Student Progress



Progress in subjects  
from year-to-year

### Closing Performance Gaps



Emphasis on high-level achievement  
of lowest performing students

### Postsecondary Readiness



Graduation rates  
Diploma plans  
College and career readiness standards

Schools receiving the **MET STANDARD** rating may qualify for special honors called Distinctions.

There are 7 possible distinctions:



- Academic Achievement in Reading/English Language Arts
- Academic Achievement in Mathematics
- Academic Achievement in Science
- Academic Achievement in Social Studies
- Top 25 Percent: Student Progress
- Top 25 Percent: Closing Performance Gaps
- Postsecondary Readiness



Want to learn more?

Visit the Texas Education Agency online at [www.tea.texas.gov](http://www.tea.texas.gov)



## Highlights of the 2018 State Academic Accountability Results

The state academic accountability system underwent an overhaul under House Bill (HB) 22 (85th Texas Legislature, Regular Session, 2017). HB 22 established three domains of indicators to evaluate the academic performance of districts, open-enrollment charter schools, and campuses: Student Achievement, School Progress, and Closing the Gaps. HB 22 requires the commissioner to assign districts a rating of A, B, C, D, or F for overall performance, as well as for performance in each domain, in August 2018. Campuses receive a *Met Standard*, *Met Alternative Standard*, or *Improvement Required* rating for overall performance, as well as for performance in each domain.

Campuses will receive A–F ratings beginning in August 2019. HB 22 requires the commissioner to report to the legislature by January 1, 2019, the overall and domain performance rating each campus would have received for the 2017–18 school year if the A–F rating system for campuses had been in place.

### Overview of the 2018 Accountability System

The overall design of the accountability system evaluates performance according to three domains:

**Student Achievement** evaluates performance across all subjects for all students, on both general and alternate assessments, College, Career, and Military Readiness (CCMR) indicators, and graduation rates.

**School Progress** measures district and campus outcomes in two areas: the number of students that grew at least one year academically (or are on track) as measured by STAAR results and the achievement of all students relative to districts or campuses with similar economically disadvantaged percentages.

**Closing the Gaps** uses disaggregated data to demonstrate differentials among racial/ethnic groups, socioeconomic backgrounds and other factors. The indicators included in this domain, as well as the domain's construction, align the state accountability system with the federal Every Student Succeeds Act (ESSA).

### The State of Texas

More than five million students were enrolled in Texas public schools in the 2017–18 school year, and they took more than eight and one-half million STAAR assessments in reading, mathematics, writing, science, and social studies. Of all assessments taken, 77 percent met the Approaches Grade Level standard or above, 48 percent met the Meets Grade Level standard or above, and 22 percent met the Masters Grade Level standard for 2017–18.

### Districts (including Open-Enrollment Charter Schools)

Of the 1,200 districts in Texas, 153 (12.8%) earned an A overall rating, 356 (29.7%) earned a B overall rating, 247 (20.6%) earned a C overall rating, 57 (4.8%) earned a D overall rating, and 16 (1.3%) earned an F overall rating.

In 2018, a school district or charter school comprised of only one campus receives either a *Met Standard* or *Improvement Required* rating for 2018 to align with the campus rating. Of these 272 single-campus districts and charters, 254 (21.2%) earned a *Met Standard* or *Met Alternative Standard* overall rating, and 12 (1.0%) earned an *Improvement Required* overall rating. Six single-campus districts and charter schools were labeled *Not Rated*.

Under the Hurricane Harvey Provision, 92 (7.7%) districts and charter schools were labeled *Not Rated: Hurricane Harvey Provision*. One (0.1%) district was labeled *Not Rated: Data Integrity Issues*. The remaining 12 (1.0%) school districts and charter schools were labeled *Not Rated*.

## Rating Labels

Districts and campuses receive an overall rating, as well as a rating for each domain. The 2018 rating labels for districts and campuses are as follows.

### Districts

- **A, B, C, or D:** Assigned for overall performance and for performance in each domain to districts (including those evaluated under alternative education accountability [AEA]) that meet the performance target for the letter grade
- **F:** Assigned for overall performance and for performance in each domain to districts (including AEAs) that do not meet the performance target to earn at least a *D*
- **Not Rated:** Assigned to districts that—under certain, specific circumstances—do not receive a rating

### Single-Campus Districts

A school district or charter school comprised of only one campus that shares the same 2018 performance data with its only campus must meet the performance targets required for the campus in order to demonstrate acceptable performance. For these single-campus school districts and charter schools, the 2018 performance targets applied to the campus are also applied to the district, ensuring that both the district and campus receive identical ratings. Single-campus districts receive either a *Met Standard* or *Improvement Required* rating for 2018 to align with the campus rating. School districts or charter schools that meet the definition above are considered single-campus districts or charter schools in any criteria outlined in this manual.

## Highlights of the 2018 State Academic Accountability Results

District Accountability Rating	Count	Percentage
A	153	12.8%
B	356	29.7%
C	247	20.6%
D	57	4.8%
F	16	1.3%
<i>Met Standard/Met Alternative Standard</i>	254	21.2%
<i>Improvement Required</i>	12	1.0%
<i>Not Rated</i>	12	1.0%
<i>Not Rated: Data Integrity Issues</i>	1	0.1%
<i>Not Rated: Harvey Provision</i>	92	7.7%
Totals	1,200	100%

\*Single-campus districts receive either a *Met Standard* or *Improvement Required* rating for 2018 to align with the campus rating.

### Campuses (including Open-Enrollment Charter Schools)

Of the 8,759 campuses in Texas, 7,818 (89.3%) earned a *Met Standard* or *Met Alternative Standard* overall rating, and 349 (4.0%) campuses were rated *Improvement Required* overall. Under the Hurricane Harvey Provision, 86 (1.0%) campuses were labeled *Not Rated: Hurricane Harvey Provision*. One (0.0%) campus was labeled *Not Rated: Data Integrity Issues*, and the remaining 505 (5.7%) campuses were labeled *Not Rated*.

## Open-Enrollment Charter Schools

Of the 177 open-enrollment charter schools in Texas, 32 (18.1%) earned an A overall rating, 22 (12.4%) earned a B overall rating, 15 (8.5%) earned a C overall rating, 11 (6.2%) earned a D overall rating, and seven (4.0%) earned an F overall rating. For the single-campus charter schools, 47 (26.6%) earned a *Met Standard* overall rating, nine (5.1%) earned a *Met Alternative Standard* overall rating, and seven (4.0%) earned an *Improvement Required* overall rating. Under the Hurricane Harvey Provision, 17 (9.6%) open-enrollment charter schools were labeled *Not Rated: Hurricane Harvey Provision*. The remaining 10 (5.6%) open-enrollment charter schools were labeled *Not Rated*.

Of the 705 open-enrollment charter school campuses in Texas, 558 (79.1%) earned a *Met Standard* or *Met Alternative Standard* overall rating, and 56 (7.9%) campuses were rated *Improvement Required* overall. Under the Hurricane Harvey Provision, 11 (1.6%) charter school campuses were labeled *Not Rated: Hurricane Harvey Provision*. The remaining 80 (11.3%) charter school campuses were labeled *Not Rated*.

## Alternative Education Campuses (AECs)

Of the 377 AECs evaluated under the alternative education accountability (AEA) provisions, 217 (57.6%) earned a *Met Alternative Standard* overall rating, and 41 (10.9%) were rated *Improvement Required* overall. Under the Hurricane Harvey Provision, six (1.6%) AECs were labeled *Not Rated: Hurricane Harvey Provision*. The remaining 113 (30.0%) AECs were labeled *Not Rated*, eight of which are AECs of choice, 17 are dropout recovery schools, and 88 are residential treatment facilities.

Of the 377 AECs, 147 (39.0%) are charter school campuses. Of these, 85 (57.8%) earned a *Met Alternative Standard* overall rating, and 17 (11.6%) were rated *Improvement Required* overall. One AEC

## Campuses

- ***Met Standard:*** Assigned for overall performance and for performance in each domain to campuses that meet the performance targets
- ***Improvement Required:*** Assigned for overall performance and for performance in each domain to campuses (including AECs) that do not meet the performance targets
- ***Met Alternative Standard:*** Assigned for overall performance and for performance in each domain to alternative education campuses evaluated under AEA provisions that meet the performance targets
- ***Not Rated:*** Assigned to campuses that—under certain, specific circumstances—do not receive a rating

In a few specific circumstances, a district or campus does not receive a rating. When this occurs, a district or campus is given one of the following labels.

***Not Rated*** indicates that a district or campus does not receive a rating for one or more of the following reasons:

- The district or campus has no data in the accountability subset.
- The district or campus has insufficient data to assign a rating.
- The district operates only residential facilities.
- The campus is a Juvenile Justice Alternative Education Program (JJAEP).
- The campus is a Disciplinary Alternative Education Program (DAEP).
- The campus is a residential facility.
- The commissioner otherwise determines that the district or campus will not be rated.

***Not Rated: Data Integrity Issues*** indicates data accuracy or integrity have compromised performance results, making it impossible to assign a rating. The assignment of a *Not Rated: Data Integrity Issues* label may be permanent or temporary pending investigation.

***Not Rated: Annexation*** indicates that the campus is in its first school year after annexation by another district and, therefore, is not rated, as allowed by the annexation agreement with the agency.

## Highlights of the 2018 State Academic Accountability Results

was labeled *Not Rated: Hurricane Harvey Provision*. The remaining 43 (29.3%) charter AECs were labeled *Not Rated* as they are residential treatment facilities.

Campus Accountability Rating	Count	Percentage
<i>Met Standard/Met Alternative Standard</i>	7,818	89.3%
<i>Improvement Required</i>	349	4.0%
<i>Not Rated</i>	505	5.8%
<i>Not Rated: Data Integrity Issues</i>	1	0.0%
<i>Not Rated: Harvey Provision</i>	86	1.0%
Totals	8,759	100%

### Districts and Campuses Labeled *Not Rated*

Of the 1,200 districts and open-enrollment charter schools evaluated, 92 (7.7%) districts and charters were labeled *Not Rated: Hurricane Harvey Provision*. Thirteen (1.0%) were labeled *Not Rated*. Of those, ten (83.3%) were residential treatment facilities (RTFs), and three were not rated for other reasons.

Of the 8,759 campuses evaluated, 86 (1.0%) campuses were labeled *Not Rated: Hurricane Harvey Provision*, and 506 (5.8%) campuses were labeled *Not Rated*. Of those 506 *Not Rated* campuses, 393 (77.7%) were juvenile justice alternative education programs, disciplinary alternative education programs, or RTFs; 103 (20.4%) could not be rated because they did not have enough assessment results to meet minimum-size requirements; and ten were not rated for other reasons.

### Distinction Designations

Only campuses that receive a *Met Standard* overall rating and districts that receive an A, B, C, or D overall rating are eligible for distinction designations. AECs are not eligible for distinction designations.

Of the 8,759 campuses in Texas, 7,601 (86.8%) were evaluated for at least one distinction designation. Of those campuses, 2,462 (32.4%) earned a distinction for postsecondary readiness, 2,120 (27.9%) earned a distinction for closing the gaps, 2,053 (27.0%) earned a distinction for academic growth, 2,157 (28.4%) for achievement in English language arts/reading, 2,018 (26.6%) for achievement in science, 1,901 (25.0%) for achievement in mathematics, and 957 (12.6%) earned a distinction for achievement in social studies.

Altogether, 4,586 (52.4%) campuses earned one or more distinctions, while 448 (5.1%) campuses earned every distinction for which they were eligible. Of the 1,200 districts evaluated, 61 (5.1%) districts earned the distinction for postsecondary readiness.

### Accountability Advisory Groups

Educators, school board members, business and community representatives, professional organizations, and legislative representatives from across the state have been instrumental in developing the current accountability system.

**Accountability Technical Advisory Committee (ATAC)** includes representatives from school districts, charter schools, and regional education service centers (ESCs). Members made recommendations to address technical issues for 2018 accountability.

**Accountability Policy Advisory Committee (APAC)** includes representatives from legislative offices, school districts, charter schools, and the business community. Members identified issues critical to the accountability system and reviewed the ATAC recommendations. The APAC either endorsed the ATAC recommendations or developed its own, which were forwarded to the commissioner. The commissioner considered all proposals and released the House Bill 22 2018 Accountability Decisions Framework on April 10, 2018, which is reflected in this manual.

The accountability development proposals and supporting materials that were reviewed and discussed at each advisory group meeting are available online at <http://tea.texas.gov/2018AccountabilityDevelopment/>.

**HOW WELL IS THIS DISTRICT  
PERFORMING OVERALL?**



	Component Score	Scaled Score	Rating
Overall		89	B
Student Achievement		87	B
STAAR Performance	52	83	
College, Career and Military Readiness	67	92	
Graduation Rate	95.3	85	
School Progress		89	B
Academic Growth	70	80	B
Relative Performance (Eco Dis: 53.4%)	60	90	A
Closing the Gaps	86	88	B

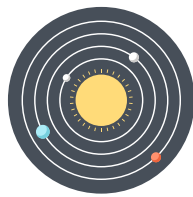
## Notes:

- This district did not receive an overall or domain rating of A because the district includes at least one campus with an overall or corresponding domain rating of Improvement Required. In this case, the district overall or corresponding domain scaled score is limited to an 89.

District Name	Campus Name	Grades	Total Number of Students	Overall Grade/Rating	Overall Score	Student Achievement Score	Academic Growth Score	Relative Performance Score	Closing the Gaps Score	Dist. Reading	Dist. Math	Dist. Science	Dist. Soc Studies	Dist. Progress	Dist. Closing the Gap	Dist. Post-Sec Readiness
AUSTIN ISD			81346	B	89	87	80	90	88							N
AUSTIN ISD	AUSTIN High School	09 - 12	2262	Met Standard	89	92	76	83	81	Y	N	N	N	N	N	Y
AUSTIN ISD	LANIER High School	09 - 12	1584	Met Standard	80	80	75	82	76	Y	N	N	N	N	Y	Y
AUSTIN ISD	MCCALLUM High School	09 - 12	1755	Met Standard	92	93	79	83	88	Y	Y	N	N	N	N	Y
AUSTIN ISD	REAGAN High School	09 - 12	1248	Met Standard	80	79	73	81	78	Y	N	N	Y	N	Y	Y
AUSTIN ISD	TRAVIS High School	09 - 12	1227	Met Standard	83	75	86	79	76	Y	N	Y	N	Y	Y	Y
AUSTIN ISD	CROCKETT High School	09 - 12	1463	Met Standard	80	82	75	82	75	N	N	N	N	N	Y	Y
AUSTIN ISD	ANDERSON High School	09 - 12	2216	Met Standard	92	94	73	85	87	Y	Y	Y	Y	N	N	Y
AUSTIN ISD	ALTERNATIVE LEARNING Ctr.	06 - 12	101	Not Rated	.	.	.	.	.							
AUSTIN ISD	BOWIE High School	09 - 12	2867	Met Standard	97	95	88	82	100	N	Y	Y	Y	Y	Y	Y
AUSTIN ISD	LBJ High School	09 - 12	794	Met Standard	79	75	69	80	77	Y	N	Y	N	N	Y	Y
AUSTIN ISD	GARZA INDEPENDENCE High	11 - 12	147	Met Alternative Standard	91	91	.	.	.							
AUSTIN ISD	AKINS High School	09 - 12	2763	Met Standard	81	81	81	81	80	N	N	N	N	N	Y	Y
AUSTIN ISD	LASA High School	09 - 12	1185	Met Standard	99	98	87	96	100	Y	Y	Y	Y	Y	Y	Y
AUSTIN ISD	EASTSIDE MEMORIAL AT THE JOHNSTON	09 - 12	486	Met Standard	76	64	76	66	76	N	N	N	N	N	N	N
AUSTIN ISD	GRADUATION PREP AC. TRAVIS	09 - 12	145	Improvement Required	58	70	.	.	30							
AUSTIN ISD	GRADUATION PREP AC. LANIER	09 - 12	73	Met Alternative Standard	82	82	.	.	.							
AUSTIN ISD	TRAVIS COUNTY DAY SCHOOL	09 - 10	8	Not Rated	.	.	.	.	.							
AUSTIN ISD	RICHARDS SCH FOR YOUNG WOMEN LEADERS	06 - 12	827	Met Standard	97	95	83	95	100	Y	Y	Y	Y	N	Y	Y
AUSTIN ISD	INTERNATION AL High School	09 - 10	191	Met Alternative Standard	83	73	80	.	90							
AUSTIN ISD	TRAVIS CO. JUVENILE DET.	08 - 11	34	Not Rated	.	.	.	.	.							
AUSTIN ISD	PHOENIX ACADEMY	08 - 12	19	Not Rated	.	.	.	.	.							
AUSTIN ISD	LEADERSHIP ACADEMY	10 - 12	16	Not Rated	.	.	.	.	.							
AUSTIN ISD	TRAVIS COUNTY JJAEP	09 - 12	3	Not Rated	.	.	.	.	.							
AUSTIN ISD	FULMORE Middle School	06 - 08	997	Met Standard	81	79	63	85	72	Y	N	Y	Y	N	N	Y
AUSTIN ISD	KEALING Middle School	06 - 08	1222	Met Standard	92	94	88	92	87	Y	Y	Y	N	Y	N	Y
AUSTIN ISD	LAMAR Middle School	06 - 08	1130	Met Standard	86	90	74	70	78	N	N	N	N	N	N	N
AUSTIN ISD	BURNET Middle School	06 - 08	967	Met Standard	63	57	58	63	62	N	N	N	N	N	N	N
AUSTIN ISD	O HENRY Middle School	06 - 08	862	Met Standard	83	86	74	72	75	N	N	Y	N	N	N	N
AUSTIN ISD	MARTIN Middle School	06 - 08	450	Met Standard	64	57	60	63	66	N	N	Y	N	N	N	N
AUSTIN ISD	MURCHISON Middle School	06 - 08	1392	Met Standard	85	89	75	70	77	N	N	N	N	N	N	N
AUSTIN ISD	WEBB Middle School	06 - 08	662	Met Standard	62	56	59	60	65	N	N	N	N	N	N	N
AUSTIN ISD	BEDICHEK Middle School	06 - 08	846	Met Standard	78	70	74	80	74	N	N	Y	N	N	N	N
AUSTIN ISD	DOBIE Middle School	06 - 08	579	Met Standard	68	59	58	69	67	N	N	N	N	N	N	N
AUSTIN ISD	COVINGTON Middle School	06 - 08	660	Met Standard	77	75	77	77	76	Y	N	N	N	Y	N	N
AUSTIN ISD	MENDEZ Middle School	06 - 08	646	Improvement Required	54	52	58	56	45	N	N	N	N	N	N	N
AUSTIN ISD	BAILEY Middle School	06 - 08	1006	Met Standard	83	85	70	72	78	N	N	N	N	N	N	N
AUSTIN ISD	SMALL Middle School	06 - 08	1231	Met Standard	87	87	80	70	88	N	N	N	N	N	N	N
AUSTIN ISD	PARDES Middle School	06 - 08	892	Met Standard	73	70	66	75	68	N	N	N	N	N	N	N
AUSTIN ISD	GORZYCKI Middle School	06 - 08	1275	Met Standard	94	94	84	79	95	N	N	Y	N	N	N	Y
AUSTIN ISD	GARCIA YMLA Middle School	06 - 08	390	Met Standard	68	59	58	69	65	N	N	N	N	N	N	N
AUSTIN ISD	SADLER MEANS YMLA Middle	06 - 08	388	Improvement Required	59	54	56	58	63	N	N	N	N	N	N	N
AUSTIN ISD	ALLISON Elementary	EE - 05	477	Met Standard	80	72	80	80	81	N	N	N	N	N	N	N
AUSTIN ISD	ANDREWS Elementary	PK - 05	582	Met Standard	72	59	74	65	68	N	N	N	N	N	N	N
AUSTIN ISD	BARTON HILLS Elementary	KG - 06	453	Met Standard	92	93	80	80	89	N	N	Y	N	N	N	N
AUSTIN ISD	BECKER Elementary	PK - 05	437	Met Standard	81	85	74	73	73	N	N	Y	N	N	N	N
AUSTIN ISD	BLACKSHEAR Elementary	PK - 05	378	Met Standard	82	82	62	86	74	N	N	Y	N	N	N	Y
AUSTIN ISD	BLANTON Elementary	PK - 05	515	Met Standard	82	74	80	79	86	N	Y	N	N	N	Y	Y
AUSTIN ISD	BRENTWOOD Elementary	PK - 05	671	Met Standard	86	90	69	70	75	N	N	Y	N	N	N	N
AUSTIN ISD	BROOKE Elementary	EE - 05	244	Met Standard	79	71	70	80	76	N	N	Y	N	N	N	N
AUSTIN ISD	BROWN Elementary	EE - 05	272	Met Standard	80	71	80	80	80	N	N	N	N	N	Y	N
AUSTIN ISD	BRYKER WOODS Elementary	KG - 06	456	Met Standard	88	93	77	77	77	N	N	N	N	N	N	N
AUSTIN ISD	CAMPBELL Elementary	EE - 05	187	Met Standard	71	60	72	66	67	N	N	N	N	N	N	N
AUSTIN ISD	CASIS Elementary	EE - 05	762	Met Standard	92	94	83	79	87	Y	N	N	N	N	N	N
AUSTIN ISD	CUNNINGHAM Elementary	EE - 05	394	Met Standard	85	70	89	65	76	N	N	N	N	Y	N	N
AUSTIN ISD	DAWSON Elementary	EE - 05	352	Met Standard	72	72	62	75	66	N	N	Y	N	N	N	N
AUSTIN ISD	DAEP Elementary	03 - 05	7	Not Rated	.	.	.	.	.							
AUSTIN ISD	GOVALLA Elementary	EE - 05	407	Met Standard	85	64	90	72	74	N	N	N	N	Y	N	N
AUSTIN ISD	GUILLETT Elementary	EE - 05	566	Met Standard	96	94	90	80	100	Y	Y	N	N	Y	Y	Y
AUSTIN ISD	HARRIS Elementary	EE - 05	627	Met Standard	65	59	59	66	62	N	N	N	N	N	N	N
AUSTIN ISD	HIGHLAND PARK Elementary	KG - 05	640	Met Standard	96	94	86	81	100	Y	N	Y	N	N	Y	Y
AUSTIN ISD	JOSLIN Elementary	EE - 05	282	Met Standard	62	69	57	69	47	N	N	N	N	N	N	N
AUSTIN ISD	LEE Elementary	KG - 06	442	Met Standard	88	92	75	77	78	N	N	N	N	N	N	N
AUSTIN ISD	MAPLEWOOD Elementary	PK - 06	485	Met Standard	77	82	65	74	65	N	N	N	N	N	N	N
AUSTIN ISD	MATHEWS Elementary	PK - 06	437	Met Standard	91	91	82	83	92	Y	N	N	N	Y	Y	Y

# Austin ISD Continued

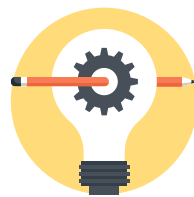
District Name	Campus Name	Grades	Total Number of Students	Overall Grade/Rating	Overall Score	Student Achievement Score	Academic Growth Score	Relative Performance Score	Closing the Gaps Score	Dist. Reading	Dist. Math	Dist. Science	Dist. Soc Studies	Dist. Progress	Dist. Closing the Gap	Dist. Post-Sec Readiness
AUSTIN ISD	METZ Elementary	EE - 05	285	Met Standard	66	59	67	63	65	N	N	N		N	N	N
AUSTIN ISD	OAK SPRINGS Elementary	EE - 05	322	Met Standard	64	52	65	54	63	N	N	N		N	N	N
AUSTIN ISD	ORTEGA Elementary	PK - 05	276	Met Standard	88	79	82	88	89	N	N	Y		N	Y	Y
AUSTIN ISD	SANCHEZ Elementary	PK - 05	258	Met Standard	78	71	69	80	73	N	N	N		N	N	N
AUSTIN ISD	PEASE Elementary	KG - 06	233	Met Standard	86	90	79	65	78	N	N	N		N	N	N
AUSTIN ISD	PECAN SPRINGS Elementary	PK - 05	453	Met Standard	80	73	75	82	75	Y	N	N		N	N	Y
AUSTIN ISD	PLEASANT HILL Elementary	EE - 05	465	Met Standard	80	74	58	83	73	N	N	Y		N	N	N
AUSTIN ISD	READ PRE-K CENTER	EE - PK	304	Met Standard	84	.	.	.	.		N			N		
AUSTIN ISD	REILLY Elementary	EE - 05	238	Met Standard	81	74	82	81	79	N	N	N		N	N	Y
AUSTIN ISD	RIDGETOP Elementary	PK - 05	371	Met Standard	75	77	59	60	71	N	N	N		N	N	N
AUSTIN ISD	ST ELMO Elementary	PK - 05	297	Met Standard	83	76	80	84	82	N	N	Y		N	N	N
AUSTIN ISD	SUMMIT Elementary	PK - 05	841	Met Standard	79	80	69	66	75	N	N	N		N	N	N
AUSTIN ISD	SIMS Elementary	EE - 05	204	Met Standard	88	72	92	81	79	N	N	N		Y	Y	Y
AUSTIN ISD	TRAVIS HIS Elementary	EE - 05	518	Met Standard	88	76	89	79	84	Y	Y	Y		Y	N	N
AUSTIN ISD	WALNUT CREEK Elementary	EE - 05	642	Met Standard	80	60	82	69	74	N	N	N		N	N	N
AUSTIN ISD	PATTON Elementary	EE - 05	982	Met Standard	79	80	69	58	78	N	N	N		N	N	N
AUSTIN ISD	WOOTEN Elementary	EE - 05	503	Met Standard	87	76	79	85	90	N	N	N		N	Y	N
AUSTIN ISD	ZAVALLA Elementary	EE - 05	297	Met Standard	83	72	77	81	86	N	N	N		N	Y	Y
AUSTIN ISD	ZILKER Elementary	EE - 05	546	Met Standard	86	90	83	70	78	Y	N	N		N	N	N
AUSTIN ISD	MENCHACA Elementary	EE - 05	715	Met Standard	72	72	58	59	71	N	N	N		N	N	N
AUSTIN ISD	OAK HILL Elementary	EE - 05	863	Met Standard	84	85	83	79	82	Y	N	Y		N	N	N
AUSTIN ISD	BARRINGTON Elementary	PK - 05	547	Met Standard	77	64	77	72	77	N	N	N		N	N	N
AUSTIN ISD	NORMAN Elementary	KG - 05	192	Met Standard	86	71	89	80	78	N	N	N		Y	Y	Y
AUSTIN ISD	PILLOW Elementary	EE - 05	514	Met Standard	63	65	59	67	55	N	N	N		N	N	N
AUSTIN ISD	WOOLDRIDGE Elementary	KG - 05	532	Met Standard	72	59	72	66	72	N	N	N		N	N	N
AUSTIN ISD	DOSS Elementary	KG - 05	832	Met Standard	89	93	77	82	78	Y	N	N		N	N	Y
AUSTIN ISD	HILL Elementary	EE - 05	952	Met Standard	93	93	89	75	94	N	N	N		N	N	N
AUSTIN ISD	ODOM Elementary	EE - 05	461	Met Standard	74	69	65	75	72	N	N	N		N	N	N
AUSTIN ISD	WINN Elementary	EE - 05	259	Met Standard	72	70	62	75	64	N	N	Y		N	N	N
AUSTIN ISD	SUNSET VALLEY Elementary	EE - 05	543	Met Standard	74	72	75	65	71	Y	N	Y		N	N	N
AUSTIN ISD	GRAHAM Elementary	EE - 05	610	Met Standard	94	91	90	92	100	Y	Y	Y		Y	Y	Y
AUSTIN ISD	LINDER Elementary	01 - 05	305	Met Standard	79	70	79	78	79	N	N	N		N	N	N
AUSTIN ISD	COOK Elementary	KG - 05	452	Met Standard	81	76	62	85	71	N	N	N		N	N	N
AUSTIN ISD	HOUSTON Elementary	EE - 05	642	Met Standard	72	58	74	62	68	N	N	Y		N	N	N
AUSTIN ISD	HART Elementary	KG - 05	681	Met Standard	82	77	67	86	74	N	N	N		N	N	N
AUSTIN ISD	PICKLE Elementary	PK - 05	544	Met Standard	71	58	72	63	68	N	N	N		N	N	N
AUSTIN ISD	MCBEE Elementary	KG - 05	392	Met Standard	84	77	74	86	79	N	N	N		N	N	N
AUSTIN ISD	WILLIAMS Elementary	EE - 05	466	Met Standard	80	71	82	75	75	N	N	N		N	N	N
AUSTIN ISD	LANGFORD Elementary	EE - 05	537	Met Standard	80	65	82	72	76	N	N	N		Y	N	N
AUSTIN ISD	BOONE Elementary	EE - 05	534	Met Standard	84	86	72	81	78	Y	N	Y		N	N	N
AUSTIN ISD	PALM Elementary	EE - 05	449	Met Standard	82	74	75	82	83	N	N	N		N	N	N
AUSTIN ISD	KOCUREK Elementary	EE - 05	576	Met Standard	74	71	74	70	75	N	N	N		N	N	N
AUSTIN ISD	CASEY Elementary	EE - 05	615	Met Standard	73	72	69	72	75	Y	N	N		N	N	N
AUSTIN ISD	RODRIGUEZ Elementary	PK - 05	503	Met Standard	70	60	70	69	70	N	N	N		N	N	N
AUSTIN ISD	WIDEN Elementary	EE - 05	522	Improvement Required	59	55	62	57	59	N	N	N		N	N	N
AUSTIN ISD	GALINDO Elementary	EE - 05	585	Met Standard	76	70	70	77	73	N	N	N		N	N	N
AUSTIN ISD	UPHAUS EARLY CHILDHOOD CTR	EE - KG	340	Met Standard	86	.	.	.	.		N	N				
AUSTIN ISD	JORDAN Elementary	EE - 05	659	Met Standard	81	72	82	80	77	N	N	N		N	N	N
AUSTIN ISD	DAVIS Elementary	EE - 05	805	Met Standard	84	88	72	70	74	N	N	N		N	N	N
AUSTIN ISD	KIKER Elementary	EE - 05	1109	Met Standard	97	95	86	83	100	Y	N	N		N	Y	Y
AUSTIN ISD	MILLS Elementary	EE - 05	852	Met Standard	96	94	88	79	100	N	N	N		N	Y	N
AUSTIN ISD	BARANOFF Elementary	KG - 05	1013	Met Standard	93	92	82	75	94	N	N	N		N	N	N
AUSTIN ISD	COMAN Elementary	EE - 05	836	Met Standard	90	91	79	81	87	Y	N	N		N	N	Y
AUSTIN ISD	CLAYTON Elementary	EE - 05	837	Met Standard	96	94	90	81	100	Y	N	N		N	Y	Y
AUSTIN ISD	BLAZIER Elementary	KG - 05	858	Met Standard	86	80	83	85	88	N	Y	Y		Y	Y	Y
AUSTIN ISD	GUERRERO THOMPSON Elementary	EE - 05	633	Met Standard	90	79	83	89	92	N	N	N		Y	Y	Y
AUSTIN ISD	BALDWIN Elementary	EE - 05	806	Met Standard	89	91	82	72	83	N	N	N		N	N	N
AUSTIN ISD	PADRON Elementary	EE - 05	759	Met Standard	84	77	80	87	78	N	N	N		N	N	N
AUSTIN ISD	OVERTON Elementary	EE - 05	557	Met Standard	76	70	69	77	74	N	N	N		N	N	N
AUSTIN ISD	PEREZ Elementary	EE - 05	649	Met Standard	78	72	72	80	73	N	N	N		N	N	N
AUSTIN ISD	DOBIE PK CENTER	EE - PK	209	Met Standard	94	.	.	.	.							
AUSTIN ISD	WEBB PRI CENTER	KG - 05	246	Met Standard	85	58	89	62	75	N	N	N		Y	N	N
AUSTIN ISD	CHILD DEVELOPMENT CTR.	PK - PK	170	Met Standard	89	.	.	.	.							
AUSTIN ISD	AUSTIN ST HOSPITAL	05 - 12	16	Not Rated	.	.	.	.	.							
AUSTIN ISD	ROSEDALE Elementary	01 - 12	132	Improvement Required	56	53	56	42	.	N	N	N	N	N		N



RESEARCH



ONLINE EDUCATION



CREATIVE PROCESS

# Bastrop ISD

## Texas Education Agency 2018 Accountability Ratings Overall Summary BASTROP ISD (011901)

HOW WELL IS THIS DISTRICT  
PERFORMING OVERALL?



	Component Score	Scaled Score	Rating
Overall		72	C
Student Achievement		75	C
STAAR Performance	39	69	
College, Career and Military Readiness	45	74	
Graduation Rate	96.4	90	
School Progress		75	C
Academic Growth	61	59	F
Relative Performance (Eco Dis: 68.8%)	42	75	C
Closing the Gaps	24	66	D

District Name	Campus Name	Grades	Total Number of Students	Overall Grade/Rating	Overall Score	Student Achievement Score	Academic Growth Score	Relative Performance Score	Closing the Gaps Score	Dist. Reading	Dist. Math	Dist. Science	Dist. Soc Studies	Dist. Progress	Dist. Closing the Gap	Dist. Post-Sec Readiness
BASTROP ISD			10863	C	72	75	59	75	66							N
BASTROP ISD	BASTROP High School	09 - 12	1400	Met Standard	77	79	63	75	73	N	N	Y	Y	N	N	N
BASTROP ISD	CEDAR CREEK High School	09 - 12	1566	Met Standard	78	79	68	78	74	N	N	Y	Y	N	N	N
BASTROP ISD	COLORADO RIVER	09 - 12	215	Met Standard	94	92	91	92	100	N	N	N	N	Y	Y	N
BASTROP ISD	GENESIS High School	09 - 12	96	Met Alternative Standard	62	75	.	.	30							
BASTROP ISD	GATEWAY School	06 - 12	21	Not Rated	.	.	.	.	.							
BASTROP ISD	BASTROP Middle School	07 - 08	771	Met Standard	76	67	77	63	73	N	N	N	Y	N	N	N
BASTROP ISD	EMILE Elementary	EE - 04	761	Improvement Required	53	62	54	58	33	N	N			N	N	N
BASTROP ISD	MINA Elementary	EE - 04	609	Met Standard	76	78	58	80	67	N	N			N	N	Y
BASTROP ISD	CEDAR CREEK Elementary	PK - 04	809	Met Standard	66	65	59	70	56	N	N			N	N	N
BASTROP ISD	BASTROP INT Middle School	05 - 06	777	Improvement Required	57	67	57	66	33	N	N	N		N	N	N
BASTROP ISD	CEDAR CREEK Middle School	07 - 08	841	Met Standard	72	64	72	66	72	N	N	N	N	N	N	N
BASTROP ISD	RED ROCK Elementary	PK - 04	639	Met Standard	66	62	60	67	64	N	N			N	N	N
BASTROP ISD	CEDAR CREEK INT Middle School	05 - 06	958	Met Standard	76	74	57	81	63	N	N	Y		N	N	N
BASTROP ISD	BLUEBONNET Elementary	PK - 04	771	Met Standard	72	72	57	76	63	N	N			N	N	N
BASTROP ISD	LOST PINES Elementary	PK - 04	629	Met Standard	66	62	55	67	63	N	N			N	N	N

# Del Valle ISD

## Texas Education Agency 2018 Accountability Ratings Overall Summary DEL VALLE ISD (227910)

HOW WELL IS THIS DISTRICT  
PERFORMING OVERALL?



	Component Score	Scaled Score	Rating
Overall		69	D
Student Achievement		68	D
STAAR Performance	35	60	
College, Career and Military Readiness	41	71	
Graduation Rate	94.3	80	
School Progress		73	C
Academic Growth	65	69	D
Relative Performance (Eco Dis: 82.2%)	38	73	C
Closing the Gaps	15	60	D

District Name	Campus Name	Grades	Total Number of Students	Overall Grade/Rating	Overall Score	Student Achievement Score	Academic Growth Score	Relative Performance Score	Closing the Gaps Score	Dist. Reading	Dist. Math	Dist. Science	Dist. Soc Studies	Dist. Progress	Dist. Closing the Gap	Dist. Post-Sec Readiness
DEL VALLE ISD			11169	D	69	68	69	73	60							N
DEL VALLE ISD	DEL VALLE High School	09 - 12	3125	Met Standard	76	78	66	78	70	N	N	Y	Y	N	N	Y
DEL VALLE ISD	DEL VALLE OPPORTUNITY CTR	09 - 12	195	Met Alternative Standard	60	73	.	.	30							
DEL VALLE ISD	DEL VALLE Middle School	06 - 08	957	Met Standard	71	67	69	72	68	N	N	N	N	N	N	N
DEL VALLE ISD	JOHN P OJEDA Middle School	06 - 08	906	Improvement Required	59	58	58	63	59	N	N	N	N	N	N	N
DEL VALLE ISD	DAILEY Middle School	06 - 08	675	Met Standard	68	59	69	66	65	N	N	N	N	N	N	N
DEL VALLE ISD	POPHAM Elementary	PK - 05	752	Met Standard	74	59	75	63	72	N	N	N		N	N	N
DEL VALLE ISD	SMITH Elementary	EE - 05	732	Met Standard	81	69	82	75	78	N	N	Y		N	N	N
DEL VALLE ISD	HILLCREST Elementary	PK - 05	560	Improvement Required	59	56	62	59	54	N	N	N		N	N	N
DEL VALLE ISD	BATY Elementary	EE - 05	650	Met Standard	79	60	80	69	75	N	N	N		N	N	N
DEL VALLE ISD	HORNSBY-DUNLAP Elementary	EE - 05	566	Met Standard	64	59	65	60	60	N	N	N		N	N	N
DEL VALLE ISD	DEL VALLE Elementary	EE - 05	790	Met Standard	71	60	70	63	72	N	N	N		N	N	N
DEL VALLE ISD	CREEDMOOR Elementary	EE - 05	639	Met Standard	68	58	69	62	65	N	N	N		N	N	N
DEL VALLE ISD	JOSEPH GILBERT Elementary	EE - 05	622	Met Standard	81	71	82	79	79	N	N	N		N	N	N

# Dripping Springs ISD

## HOW WELL IS THIS DISTRICT PERFORMING OVERALL?



## Texas Education Agency 2018 Accountability Ratings Overall Summary DRIPPING SPRINGS ISD (105904)

	Component Score	Scaled Score	Rating
Overall		92	A
Student Achievement		93	A
STAAR Performance	66	92	
College, Career and Military Readiness	72	93	
Graduation Rate	99.4	95	
School Progress		84	B
Academic Growth	72	84	B
Relative Performance (Eco Dis: 9.0%)	69	74	C
Closing the Gaps	90	91	A

District Name	Campus Name	Grades	Total Number of Students	Overall Grade/Rating	Overall Score	Student Achievement Score	Academic Growth Score	Relative Performance Score	Closing the Gaps Score	Dist. Reading	Dist. Math	Dist. Science	Dist. Soc Studies	Dist. Progress	Dist. Closing the Gap	Dist. Post-Sec Readiness
DRIPPING SPRINGS ISD			6430	A	92	93	84	74	91							N
DRIPPING SPRINGS ISD	DRIPPING SPRINGS High School	09 - 12	1866	Met Standard	91	93	72	71	86	N	N	N	N	N	N	N
DRIPPING SPRINGS ISD	DRIPPING SPRINGS Middle School	06 - 08	760	Met Standard	90	91	81	69	86	N	N	N	N	N	N	N
DRIPPING SPRINGS ISD	SYCAMORE SPRINGS Middle School	06 - 08	743	Met Standard	92	92	83	63	91	N	N	Y	N	N	N	N
DRIPPING SPRINGS ISD	DRIPPING SPRINGS Elementary	EE - 05	766	Met Standard	90	92	91	79	86	N	N	Y		Y	N	N
DRIPPING SPRINGS ISD	WALNUT SPRINGS Elementary	EE - 05	714	Met Standard	84	85	80	63	83	N	N	N		N	N	N
DRIPPING SPRINGS ISD	ROOSTER SPRINGS Elementary	EE - 05	787	Met Standard	87	90	77	58	79	N	N	N		N	N	N
DRIPPING SPRINGS ISD	SYCAMORE SPRINGS Elementary	EE - 05	794	Met Standard	87	91	69	60	78	N	N	N		N	N	N

# Eanes ISD

## HOW WELL IS THIS DISTRICT PERFORMING OVERALL?



## Texas Education Agency 2018 Accountability Ratings Overall Summary EANES ISD (227909)

	Component Score	Scaled Score	Rating
Overall		95	A
Student Achievement		95	A
STAAR Performance	77	94	
College, Career and Military Readiness	86	97	
Graduation Rate	99.7	95	
School Progress		90	A
Academic Growth	77	90	A
Relative Performance (Eco Dis: 2.6%)	82	86	B
Closing the Gaps	95	95	A

District Name	Campus Name	Grades	Total Number of Students	Overall Grade/Rating	Overall Score	Student Achievement Score	Academic Growth Score	Relative Performance Score	Closing the Gaps Score	Dist. Reading	Dist. Math	Dist. Science	Dist. Soc Studies	Dist. Progress	Dist. Closing the Gap	Dist. Post-Sec Readiness
EANES ISD			8055	A	95	95	90	86	95							N
EANES ISD	WESTLAKE High School	09 - 12	2679	Met Standard	97	96	84	82	100	Y	Y	Y	Y	N	Y	Y
EANES ISD	ADULT TRANSITION SERVICES	12 - 12	18	Not Rated	.	.	.	.	.							
EANES ISD	HILL COUNTRY Middle School	06 - 08	1072	Met Standard	94	95	88	82	92	N	N	N	Y	N	N	Y
EANES ISD	WEST RIDGE Middle School	06 - 08	920	Met Standard	97	95	88	82	100	Y	N	N	Y	N	Y	Y
EANES ISD	EANES Elementary	EE - 05	628	Met Standard	91	92	83	70	89	N	N	N		N	N	N
EANES ISD	CEDAR CREEK Elementary	KG - 05	518	Met Standard	95	93	89	77	100	N	N	N		N	Y	N
EANES ISD	VALLEY VIEW Elementary	KG - 05	514	Met Standard	87	92	62	72	75	N	N	N		N	N	N
EANES ISD	FOREST TRAIL Elementary	KG - 05	577	Met Standard	97	95	89	84	100	N	N	N		N	Y	Y
EANES ISD	BARTON CREEK Elementary	KG - 05	474	Met Standard	96	94	92	82	100	N	N	Y		Y	Y	N
EANES ISD	BRIDGE POINT Elementary	KG - 05	655	Met Standard	97	95	85	83	100	Y	N	N		N	Y	Y

# Elgin ISD

## Texas Education Agency 2018 Accountability Ratings Overall Summary ELGIN ISD (011902)

### HOW WELL IS THIS DISTRICT PERFORMING OVERALL?



	Component Score	Scaled Score	Rating
Overall		78	C
Student Achievement		75	C
STAAR Performance	33	58	
College, Career and Military Readiness	56	85	
Graduation Rate	97.4	90	
School Progress		80	B
Academic Growth	63	60	D
Relative Performance (Eco Dis: 75.9%)	45	80	B
Closing the Gaps	36	72	C

District Name	Campus Name	Grades	Total Number of Students	Overall Grade/Rating	Overall Score	Student Achievement Score	Academic Growth Score	Relative Performance Score	Closing the Gaps Score	Dist. Reading	Dist. Math	Dist. Science	Dist. Soc Studies	Dist. Progress	Dist. Closing the Gap	Dist. Post-Sec Readiness
ELGIN ISD			4307	C	78	75	60	80	72							N
ELGIN ISD	ELGIN High School	09 - 12	1248	Met Standard	80	81	63	82	74	Y	N	Y	Y	N	N	Y
ELGIN ISD	BASTROP COUNTY JUVENILE BOOT CAMP Middle School	08 - 08	2	Not Rated	.	.	.	.	.							
ELGIN ISD	PHOENIX High School	09 - 12	47	Improvement Required	50	50	.	.	.							
ELGIN ISD	ELGIN MIDDLE Middle School	06 - 08	935	Met Standard	61	62	60	66	50	N	N	N	N	N	N	N
ELGIN ISD	BOOKER T WASHINGTON Elementary	KG - 05	620	Met Standard	70	55	72	55	65	N	N	N		N	N	N
ELGIN ISD	ELGIN Elementary	EE - 05	796	Met Standard	72	57	72	59	71	N	N	N		N	N	N
ELGIN ISD	NEIDIG Elementary	KG - 05	659	Improvement Required	57	56	56	56	58	N	N	N		N	N	N

# Georgetown ISD

## Texas Education Agency 2018 Accountability Ratings Overall Summary GEORGETOWN ISD (246904)

### HOW WELL IS THIS DISTRICT PERFORMING OVERALL?



	Component Score	Scaled Score	Rating
Overall		80	B
Student Achievement		83	B
STAAR Performance	42	73	
College, Career and Military Readiness	60	90	
Graduation Rate	97.9	90	
School Progress		76	C
Academic Growth	62	59	F
Relative Performance (Eco Dis: 42.4%)	51	76	C
Closing the Gaps	42	74	C

District Name	Campus Name	Grades	Total Number of Students	Overall Grade/Rating	Overall Score	Student Achievement Score	Academic Growth Score	Relative Performance Score	Closing the Gaps Score	Dist. Reading	Dist. Math	Dist. Science	Dist. Soc Studies	Dist. Progress	Dist. Closing the Gap	Dist. Post-Sec Readiness
GEORGETOWN ISD			11508	B	80	83	59	76	74	N	N					N
GEORGETOWN ISD	GEORGETOWN High School	09 - 12	1958	Met Standard	82	86	60	73	74	N	N	N	N	N	N	N
GEORGETOWN ISD	CHIP RICHART High School	09 - 12	65	Met Alternative Standard	70	87	84	.	30							
GEORGETOWN ISD	EAST VIEW High School	09 - 12	1572	Met Standard	81	83	69	79	77	Y	Y	Y	N	N	N	Y
GEORGETOWN ISD	DOUGLAS BENOLD Middle School	06 - 08	891	Met Standard	79	81	70	58	74	N	N	N	N	N	N	N
GEORGETOWN ISD	JAMES TIPPIT Middle School	06 - 08	683	Met Standard	62	62	58	57	63	N	N	N	N	N	N	N
GEORGETOWN ISD	CHARLES A FORBES Middle	06 - 08	674	Improvement Required	59	70	58	55	59	N	N	N	N	N	N	N
GEORGETOWN ISD	GEORGE WAGNER Middle School	06 - 07	430	Improvement Required	50	58	50	54	30	N	N			N	N	N
GEORGETOWN ISD	ANNIE PURL Elementary	EE - 05	808	Met Standard	64	54	65	54	60	N	N	N		N	N	N
GEORGETOWN ISD	CARVER Elementary	EE - 05	788	Met Standard	67	70	58	57	60	N	N	N		N	N	N
GEORGETOWN ISD	FROST Elementary	EE - 05	354	Met Standard	69	62	70	58	65	N	N	N		N	N	N
GEORGETOWN ISD	PAT COOPER Elementary	PK - 05	550	Met Standard	71	62	74	57	65	N	N	N		N	N	N
GEORGETOWN ISD	DELL PICKETT Elementary	EE - 05	286	Met Standard	78	75	79	70	77	N	N	N		N	N	N
GEORGETOWN ISD	RAYE MCCOY Elementary	KG - 05	607	Met Standard	85	83	77	59	88	N	N	N		N	N	N
GEORGETOWN ISD	VILLAGE Elementary	PK - 05	554	Met Standard	85	88	83	81	79	N	N	N		Y	N	Y
GEORGETOWN ISD	JO ANN FORD Elementary	KG - 05	559	Met Standard	94	91	86	70	100	N	N	N		N	Y	N
GEORGETOWN ISD	JAMES MITCHELL Elementary	PK - 05	721	Improvement Required	59	55	58	52	62	N	N	N		N	N	N
GEORGETOWN ISD	WILLIAMSON CO J J A E P	08 - 12	2	Not Rated	.	.	.	.	.							
GEORGETOWN ISD	WILLIAMSON CO JUVENILE DET.	09 - 11	6	Not Rated	.	.	.	.	.							

# Hays CISD

## HOW WELL IS THIS DISTRICT PERFORMING OVERALL?



## Texas Education Agency 2018 Accountability Ratings Overall Summary HAYS CISD (105906)

	Component Score	Scaled Score	Rating
Overall		77	C
Student Achievement		75	C
STAAR Performance	45	76	
College, Career and Military Readiness	49	77	
Graduation Rate	92.7	70	
School Progress		80	B
Academic Growth	70	80	B
Relative Performance (Eco Dis: 47.5%)	47	74	C
Closing the Gaps	32	71	C

District Name	Campus Name	Grades	Total Number of Students	Overall Grade/Rating	Overall Score	Student Achievement Score	Academic Growth Score	Relative Performance Score	Closing the Gaps Score	Dist. Reading	Dist. Math	Dist. Science	Dist. Soc Studies	Dist. Progress	Dist. Closing the Gap	Dist. Post-Sec Readiness
HAYS CISD			19788	C	77	75	80	74	71							N
HAYS CISD	JACK C HAYS High School	09 - 12	2904	Met Standard	83	84	81	77	81	N	N	N	N	N	N	N
HAYS CISD	LIVE OAK ACADEMY High School	09 - 12	195	Met Alternative Standard	81	88	68	.	63							
HAYS CISD	LEHMAN High School	09 - 12	2562	Met Standard	75	75	66	76	72	N	N	N	N	N	N	N
HAYS CISD	R C BARTON Middle School	06 - 08	683	Met Standard	92	90	90	79	98	Y	N	N	Y	Y	Y	N
HAYS CISD	ERIC DAHLSTROM Middle School	06 - 08	801	Met Standard	87	87	79	57	88	N	N	N	N	N	N	N
HAYS CISD	LAURA B WALLACE Middle School	06 - 08	801	Met Standard	72	72	70	63	71	N	N	N	N	N	N	N
HAYS CISD	ARMANDO CHAPA Middle School	06 - 08	806	Met Standard	67	69	63	63	63	N	N	N	N	N	N	N
HAYS CISD	D J RED SIMON Middle School	06 - 08	757	Met Standard	69	62	70	66	67	N	N	N	N	N	N	N
HAYS CISD	DR T C MCCORMICK JR Middle School	06 - 08	742	Met Standard	66	67	63	63	63	N	N	N	N	N	N	N
HAYS CISD	KYLE Elementary	EE - 05	705	Met Standard	72	69	74	58	67	N	N	N		N	N	N
HAYS CISD	TOM GREEN Elementary	EE - 05	754	Improvement Required	58	56	59	53	56	N	N	N		N	N	N
HAYS CISD	BUDA Elementary	EE - 05	578	Met Standard	73	75	58	62	67	N	N	N		N	N	N
HAYS CISD	ELM GROVE Elementary	KG - 05	895	Met Standard	86	82	79	56	96	N	N	N		N	N	N
HAYS CISD	SUSIE FUENTES Elementary	EE - 05	606	Met Standard	78	69	80	59	73	N	N	N		Y	N	N
HAYS CISD	HEMPHILL Elementary	EE - 05	824	Met Standard	78	53	80	54	73	N	N	N		N	N	N
HAYS CISD	TOBIAS Elementary	EE - 05	694	Met Standard	79	73	80	65	76	N	N	N		N	N	N
HAYS CISD	LAURA B NEBLEY Elementary	EE - 05	766	Met Standard	93	88	91	69	96	N	N	Y		Y	Y	N
HAYS CISD	SCIENCE HALL Elementary	PK - 05	754	Met Standard	80	62	82	60	74	N	N	N		Y	N	N
HAYS CISD	BLANCO VISTA Elementary	PK - 05	814	Met Standard	79	75	79	77	79	N	N	N		N	N	N
HAYS CISD	CAMINO REAL Elementary	EE - 05	798	Met Standard	79	64	80	69	75	N	N	N		N	N	N
HAYS CISD	CARPENTER HILL Elementary	EE - 05	655	Met Standard	87	90	74	60	79	N	N	N		N	N	N
HAYS CISD	RALPH PFLUGER Elementary	EE - 05	694	Met Standard	88	86	82	83	92	N	Y	N		Y	Y	Y

# Hutto ISD

## HOW WELL IS THIS DISTRICT PERFORMING OVERALL?



## Texas Education Agency 2018 Accountability Ratings Overall Summary HUTTO ISD (246906)

	Component Score	Scaled Score	Rating
Overall		79	C
Student Achievement		80	B
STAAR Performance	49	81	
College, Career and Military Readiness	42	72	
Graduation Rate	98.7	95	
School Progress		70	C
Academic Growth	66	70	C
Relative Performance (Eco Dis: 38.1%)	46	67	D
Closing the Gaps	51	76	C

District Name	Campus Name	Grades	Total Number of Students	Overall Grade/Rating	Overall Score	Student Achievement Score	Academic Growth Score	Relative Performance Score	Closing the Gaps Score	Dist. Reading	Dist. Math	Dist. Science	Dist. Soc Studies	Dist. Progress	Dist. Closing the Gap	Dist. Post-Sec Readiness
HUTTO ISD			7218	C	79	80	70	67	76							N
HUTTO ISD	HUTTO High School	09 - 12	1980	Met Standard	78	79	68	66	75	N	N	N	Y	N	N	N
HUTTO ISD	WILLIAMSON COUNTY ACADEMY	10 - 11	4	Not Rated	.	.	.	.	.							
HUTTO ISD	HUTTO Middle School	06 - 08	802	Met Standard	81	82	66	75	77	N	N	N	Y	N	N	N
HUTTO ISD	FARLEY Middle School	06 - 08	892	Met Standard	78	79	69	66	75	N	N	N	N	N	N	N
HUTTO ISD	HUTTO Elementary	PK - 05	455	Met Standard	76	75	75	59	78	N	N	N		N	N	N
HUTTO ISD	COTTONWOOD CREEK Elementary	EE - 05	613	Met Standard	78	74	77	60	79	N	N	N		N	N	N
HUTTO ISD	RAY Elementary	PK - 05	671	Met Standard	79	78	79	72	79	N	N	N		N	N	N
HUTTO ISD	VETERANS HILL Elementary	PK - 05	719	Met Standard	76	75	75	70	78	N	N	N		N	N	N
HUTTO ISD	HOWARD NORMAN Elementary	EE - 05	659	Met Standard	75	75	67	59	75	N	N	N		N	N	N
HUTTO ISD	NADINE JOHNSON Elementary	EE - 05	423	Met Standard	71	74	69	58	65	N	N	N		N	N	N

# Jarrell ISD

HOW WELL IS THIS DISTRICT  
PERFORMING OVERALL?



## Texas Education Agency 2018 Accountability Ratings Overall Summary JARRELL ISD (246907)

	Component Score	Scaled Score	Rating
Overall		79	C
Student Achievement		79	C
STAAR Performance	41	71	
College, Career and Military Readiness	52	79	
Graduation Rate	100	95	
School Progress		78	C
Academic Growth	64	65	D
Relative Performance (Eco Dis: 56.0%)	47	78	C
Closing the Gaps	58	78	C

District Name	Campus Name	Grades	Total Number of Students	Overall Grade/Rating	Overall Score	Student Achievement Score	Academic Growth Score	Relative Performance Score	Closing the Gaps Score	Dist. Reading	Dist. Math	Dist. Science	Dist. Soc Studies	Dist. Progress	Dist. Closing the Gap	Dist. Post-Sec Readiness
JARRELL ISD			1698	C	79	79	65	78	78							N
JARRELL ISD	JARRELL High School	09 - 12	462	Met Standard	81	82	66	78	77	N	N	Y	N	N	N	Y
JARRELL ISD	WILLIAMSON CO J J A E P	07 - 07	1	Not Rated	.	.	.	.	.							
JARRELL ISD	JARRELL Middle School	06 - 08	362	Met Standard	72	72	66	69	71	N	N	N	N	N	N	N
JARRELL ISD	JARRELL Elementary	EE - 02	496	Met Standard	69	.	.	.	.							
JARRELL ISD	JARRELL INT Elementary	03 - 05	377	Met Standard	69	70	65	63	68	N	N	N		N	N	N

# Lago Vista ISD

HOW WELL IS THIS DISTRICT  
PERFORMING OVERALL?



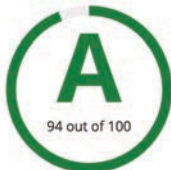
## Texas Education Agency 2018 Accountability Ratings Overall Summary LAGO VISTA ISD (227912)

	Component Score	Scaled Score	Rating
Overall		89	B
Student Achievement		86	B
STAAR Performance	57	87	
College, Career and Military Readiness	54	82	
Graduation Rate	97.4	90	
School Progress		85	B
Academic Growth	73	85	B
Relative Performance (Eco Dis: 24.2%)	56	70	C
Closing the Gaps	95	95	A

District Name	Campus Name	Grades	Total Number of Students	Overall Grade/Rating	Overall Score	Student Achievement Score	Academic Growth Score	Relative Performance Score	Closing the Gaps Score	Dist. Reading	Dist. Math	Dist. Science	Dist. Soc Studies	Dist. Progress	Dist. Closing the Gap	Dist. Post-Sec Readiness
LAGO VISTA ISD			1472	B	89	86	85	70	95							N
LAGO VISTA ISD	LAGO VISTA High School	09 - 12	446	Met Standard	86	86	83	62	86	N	N	N	N	N	N	N
LAGO VISTA ISD	LAGO VISTA Middle School	06 - 08	374	Met Standard	85	85	79	58	85	N	N	N	N	N	N	N
LAGO VISTA ISD	LAGO VISTA Elementary	EE - 03	405	Met Standard	94	91	.	85	100	Y	Y				Y	Y
LAGO VISTA ISD	LAGO VISTA INT Elementary	04 - 05	247	Met Standard	91	90	79	80	92	Y	N	N		N	Y	Y

# Lake Travis ISD

HOW WELL IS THIS DISTRICT  
PERFORMING OVERALL?



## Texas Education Agency 2018 Accountability Ratings Overall Summary LAKE TRAVIS ISD (227913)

	Component Score	Scaled Score	Rating
Overall		94	A
Student Achievement		93	A
STAAR Performance	70	93	
College, Career and Military Readiness	81	95	
Graduation Rate	97.9	90	
School Progress		89	B
Academic Growth	75	89	B
Relative Performance (Eco Dis: 11.6%)	76	85	B
Closing the Gaps	97	97	A

District Name	Campus Name	Grades	Total Number of Students	Overall Grade/Rating	Overall Score	Student Achievement Score	Academic Growth Score	Relative Performance Score	Closing the Gaps Score	Dist. Reading	Dist. Math	Dist. Science	Dist. Soc Studies	Dist. Progress	Dist. Closing the Gap	Dist. Post-Sec Readiness
LAKE TRAVIS ISD			10382	A	94	93	89	85	97							N
LAKE TRAVIS ISD	LAKE TRAVIS High School	09 - 12	3079	Met Standard	92	93	80	78	89	Y	N	Y	N	N	N	N
LAKE TRAVIS ISD	LAKE TRAVIS Middle School	06 - 08	1420	Met Standard	92	93	83	77	90	N	N	N	Y	N	N	N
LAKE TRAVIS ISD	HUDSON BEND Middle School	06 - 08	1170	Met Standard	95	93	86	87	98	Y	N	Y	Y	Y	Y	Y
LAKE TRAVIS ISD	LAKE TRAVIS Elementary	PK - 05	891	Met Standard	81	82	75	79	77	N	N	Y		N	N	N
LAKE TRAVIS ISD	LAKEWAY Elementary	KG - 05	676	Met Standard	95	93	86	72	100	N	N	N		N	Y	N
LAKE TRAVIS ISD	BEE CAVE Elementary	KG - 05	745	Met Standard	91	92	79	66	87	N	N	N		N	N	N
LAKE TRAVIS ISD	LAKE POINTE Elementary	EE - 05	731	Met Standard	96	94	88	81	100	Y	N	N		N	Y	Y
LAKE TRAVIS ISD	SERENE HILLS Elementary	KG - 05	876	Met Standard	94	92	80	69	100	N	N	N		N	Y	N
LAKE TRAVIS ISD	WEST CYPRESS HILLS Elementary	KG - 05	794	Met Standard	90	91	79	67	89	N	N	N		N	N	N

# Leander ISD

## Texas Education Agency 2018 Accountability Ratings Overall Summary LEANDER ISD (246913)

### HOW WELL IS THIS DISTRICT PERFORMING OVERALL?



	Component Score	Scaled Score	Rating
Overall		89	B
Student Achievement		93	A
STAAR Performance	61	90	
College, Career and Military Readiness	80	95	
Graduation Rate	99.2	95	
School Progress		87	B
Academic Growth	74	87	B
Relative Performance (Eco Dis: 19.1%)	71	85	B
Closing the Gaps	99	89	B

District Name	Campus Name	Grades	Total Number of Students	Overall Grade/Rating	Overall Score	Student Achievement Score	Academic Growth Score	Relative Performance Score	Closing the Gaps Score	Dist. Reading	Dist. Math	Dist. Science	Dist. Soc Studies	Dist. Progress	Dist. Closing the Gap	Dist. Post-Sec Readiness
LEANDER ISD			38936	B	89	93	87	85	89							N
LEANDER ISD	LEANDER High School	09 - 12	2190	Met Standard	91	92	75	82	88	NN	Y	N	Y	N	Y	N
LEANDER ISD	CEDAR PARK High School	09 - 12	2026	Met Standard	95	94	69	80	96	N	N	Y	N	N	Y	Y
LEANDER ISD	VISTA RIDGE High School	09 - 12	2324	Met Standard	95	94	80	82	98	N	Y	Y	N	N	Y	Y
LEANDER ISD	ROUSE High School	09 - 12	1849	Met Standard	91	92	66	78	90	N	N	N	N	N	Y	N
LEANDER ISD	VANDEGRIFT High School	09 - 12	2579	Met Standard	95	95	76	82	96	Y	Y	Y	Y	N	Y	Y
LEANDER ISD	GLENN High School	09 - 11	1137	Met Standard	75	75	60	65	76	N	N	N	Y	N	N	N
LEANDER ISD	WILLIAMSON CO ACADEMY	10 - 12	5	Not Rated	.	.	.	.	.							
LEANDER ISD	NEW HOPE High School	10 - 12	45	Met Alternative Standard	93	93	.	.	.							
LEANDER ISD	WILLIAMSON COUNTY DET. CTR.	09 - 10	2	Not Rated	.	.	.	.	.							
LEANDER ISD	CEDAR PARK Middle School	06 - 08	1356	Met Standard	94	92	84	74	100	N	N	N	N	N	Y	N
LEANDER ISD	LEANDER Middle School	06 - 08	1024	Met Standard	86	84	84	77	92	N	N	N	Y	Y	Y	N
LEANDER ISD	RUNNING BRUSHY Middle School	06 - 08	1246	Met Standard	87	84	84	70	94	N	N	N	N	Y	Y	N
LEANDER ISD	ARTIE L HENRY Middle School	06 - 08	1355	Met Standard	94	92	89	82	100	N	N	Y	Y	Y	Y	Y
LEANDER ISD	CANYON RIDGE Middle School	06 - 08	1305	Met Standard	96	94	88	80	100	N	N	Y	N	N	Y	Y
LEANDER ISD	KNOX WILEY Middle School	06 - 08	1023	Met Standard	86	85	85	72	88	N	N	N	N	Y	N	N
LEANDER ISD	FOUR POINTS Middle School	06 - 08	773	Met Standard	91	93	84	82	86	Y	N	Y	Y	N	N	Y
LEANDER ISD	FLORENCE W STILES Middle	06 - 08	1286	Met Standard	93	92	86	72	95	N	N	N	N	N	N	N
LEANDER ISD	WHITESTONE Elementary	EE - 05	774	Met Standard	82	80	77	59	86	N	N	N		N	N	N
LEANDER ISD	ADA MAE FAUBION Elementary	PK - 05	480	Met Standard	76	77	75	63	72	N	N	N		N	N	N
LEANDER ISD	BLOCK HOUSE CREEK Elementary	EE - 05	623	Met Standard	89	89	79	72	89	N	N	N		N	N	N
LEANDER ISD	CYPRESS Elementary	EE - 05	682	Met Standard	90	89	83	60	92	N	N	N		N	N	N
LEANDER ISD	C C MASON Elementary	EE - 05	593	Met Standard	81	75	83	57	77	N	N	N		Y	N	N
LEANDER ISD	LOIS F GIDDENS Elementary	EE - 05	533	Met Standard	68	69	65	56	65	N	N	N		N	N	N
LEANDER ISD	STEINER RANCH Elementary	EE - 05	541	Met Standard	95	93	90	79	100	Y	N	N		Y	Y	Y
LEANDER ISD	PAULINE NAUMANN Elementary	EE - 05	469	Met Standard	90	88	88	69	94	N	N	N		Y	N	N
LEANDER ISD	BAGDAD Elementary	EE - 05	591	Met Standard	76	69	77	66	75	N	N	N		N	N	N
LEANDER ISD	CHARLOTTE COX Elementary	EE - 05	574	Met Standard	93	92	90	74	94	Y	N	Y		Y	N	N
LEANDER ISD	LAURA WELCH BUSH Elementary	KG - 05	714	Met Standard	96	94	90	81	100	N	Y	Y		Y	Y	Y
LEANDER ISD	PATRICIA KNOWLES Elementary	EE - 05	638	Met Standard	78	70	80	62	72	N	N	N		N	N	N
LEANDER ISD	DEER CREEK Elementary	EE - 05	667	Met Standard	88	91	77	60	81	N	N	N		N	N	N
LEANDER ISD	PLEASANT HILL Elementary	EE - 05	643	Met Standard	74	75	67	57	72	N	N	N		N	N	N
LEANDER ISD	RUTLEDGE Elementary	EE - 05	831	Met Standard	95	93	88	80	100	N	N	Y		N	N	N
LEANDER ISD	JIM PLAIN Elementary	EE - 05	836	Met Standard	78	73	80	55	74	N	N	N		N	N	N
LEANDER ISD	WILLIAM J WINKLEY Elementary	EE - 05	682	Met Standard	90	88	77	58	94	N	N	N		N	N	N
LEANDER ISD	RIVER PLACE Elementary	KG - 05	789	Met Standard	87	91	83	69	79	Y	N	N		N	N	N
LEANDER ISD	GRANDVIEW HILLS Elementary	EE - 05	479	Met Standard	88	88	85	75	89	Y	Y	N		Y	Y	Y
LEANDER ISD	PARKSIDE Elementary	EE - 05	840	Met Standard	92	91	82	60	94	N	N	N		N	N	N
LEANDER ISD	WESTSIDE Elementary	EE - 05	572	Met Standard	91	90	77	59	94	N	N	N		N	N	N
LEANDER ISD	RONALD REAGAN Elementary	EE - 05	861	Met Standard	89	91	85	63	85	N	N	N		N	N	N
LEANDER ISD	RIVER RIDGE Elementary	EE - 05	714	Met Standard	96	94	90	81	100	N	Y	Y		Y	Y	N
LEANDER ISD	OFFICER LEONARD A REED Elementary	EE - 05	747	Met Standard	80	72	82	63	74	N	N	N		N	N	N
LEANDER ISD	CHRISTINE CAMACHO Elementary	EE - 05	778	Improvement Required	59	70	56	56	58	N	N	N		N	N	N
LEANDER ISD	MONTA JANE AKIN Elementary	EE - 05	760	Met Standard	87	90	74	58	79	N	N	N		N	N	N

# Liberty Hill ISD

## HOW WELL IS THIS DISTRICT PERFORMING OVERALL?



## Texas Education Agency 2018 Accountability Ratings Overall Summary LIBERTY HILL ISD (246908)

	Component Score	Scaled Score	Rating
Overall		91	A
Student Achievement		92	A
STAAR Performance	58	88	
College, Career and Military Readiness	79	95	
Graduation Rate	98.3	95	
School Progress		85	B
Academic Growth	70	80	B
Relative Performance (Eco Dis: 21.8%)	69	85	B
Closing the Gaps	86	88	B

District Name	Campus Name	Grades	Total Number of Students	Overall Grade/Rating	Overall Score	Student Achievement Score	Academic Growth Score	Relative Performance Score	Closing the Gaps Score	Dist. Reading	Dist. Math	Dist. Science	Dist. Soc Studies	Dist. Progress	Dist. Closing the Gap	Dist. Post-Sec Readiness
LIBERTY HILL ISD			4013	A	91	92	80	85	88							N
LIBERTY HILL ISD	LIBERTY HILL High School	09 - 12	1119	Met Standard	88	92	72	78	80	N	N	N	N	N	N	N
LIBERTY HILL ISD	WILLIAMSON CO ACADEMY	10 - 11	2	Not Rated	.	.	.	.	.							
LIBERTY HILL ISD	LIBERTY HILL Junior High	07 - 08	656	Met Standard	91	91	89	70	91	N	N	N	N	Y	N	N
LIBERTY HILL ISD	LIBERTY HILL Elementary	EE - 04	366	Met Standard	81	83	72	70	77	N	N			N	N	N
LIBERTY HILL ISD	LIBERTY HILL Middle School	05 - 06	618	Met Standard	83	87	60	70	73	N	N	N		N	N	N
LIBERTY HILL ISD	BILL BURDEN Elementary	PK - 04	647	Met Standard	77	77	75	59	76	N	N			N	N	N
LIBERTY HILL ISD	RANCHO SIENNA Elementary	PK - 04	605	Met Standard	85	88	72	69	77	N	N			N	N	N

# Manor ISD

## HOW WELL IS THIS DISTRICT PERFORMING OVERALL?



## Texas Education Agency 2018 Accountability Ratings Overall Summary MANOR ISD (227907)

	Component Score	Scaled Score	Rating
Overall		69	D
Student Achievement		70	C
STAAR Performance	37	65	
College, Career and Military Readiness	40	71	
Graduation Rate	94.5	80	
School Progress		73	C
Academic Growth	64	65	D
Relative Performance (Eco Dis: 74.4%)	39	73	C
Closing the Gaps	15	60	D

District Name	Campus Name	Grades	Total Number of Students	Overall Grade/Rating	Overall Score	Student Achievement Score	Academic Growth Score	Relative Performance Score	Closing the Gaps Score	Dist. Reading	Dist. Math	Dist. Science	Dist. Soc Studies	Dist. Progress	Dist. Closing the Gap	Dist. Post-Sec Readiness
MANOR ISD			9061	D	69	70	65	73	60							N
MANOR ISD	MANOR High School	09 - 12	1828	Met Standard	64	69	70	66	50	N	N	N	N	N	N	N
MANOR ISD	MANOR EXCEL ACADEMY	09 - 12	59	Met Alternative Standard	71	71	.	.	.							
MANOR ISD	MANOR NEW TECHNOLOGY High School	09 - 12	431	Met Standard	92	92	87	89	92	Y	Y	Y	Y	Y	Y	Y
MANOR ISD	MANOR Middle School	06 - 08	684	Improvement Required	49	51	57	52	30	N	N	N	N	N	N	N
MANOR ISD	DECKER Middle School	06 - 08	750	Met Standard	63	60	58	63	63	N	N	N	N	N	N	N
MANOR ISD	MANOR NEW TECHNOLOGY Middle School	06 - 08	562	Met Standard	76	75	58	81	65	N	N	N	Y	N	N	N
MANOR ISD	MANOR Elementary	PK - 05	322	Met Standard	86	72	89	80	80	N	N	N		Y	N	N
MANOR ISD	BLUEBONNET TRAIL Elementary	PK - 05	568	Met Standard	74	72	67	74	75	N	N	Y		N	N	N
MANOR ISD	DECKER Elementary	KG - 05	467	Met Standard	78	70	80	78	74	N	N	Y		N	N	N
MANOR ISD	BLAKE MANOR Elementary	PK - 05	563	Met Standard	82	72	83	80	79	N	N	N		Y	N	N
MANOR ISD	PRESIDENTIA L MEADOWS Elementary	PK - 05	582	Improvement Required	59	56	58	57	63	N	N	N		N	N	N
MANOR ISD	OAK MEADOWS Elementary	PK - 05	669	Met Standard	83	69	85	77	79	N	N	N		Y	N	N
MANOR ISD	PIONEER CROSSING Elementary	PK - 05	610	Met Standard	73	74	58	75	67	N	N	N		N	N	N
MANOR ISD	SHADOWGLE Elementary	PK - 05	575	Met Standard	77	73	77	74	78	N	N	N		N	N	N
MANOR ISD	NEW PRE-K CENTER	PK - PK	13	Met Standard	83	.	.	.	.							
MANOR ISD	LADOS Elementary	PK - 05	378	Met Standard	76	72	72	75	77	N	N	N		N	N	N

# Pflugerville ISD

## Texas Education Agency 2018 Accountability Ratings Overall Summary PFLUGERVILLE ISD (227904)

### HOW WELL IS THIS DISTRICT PERFORMING OVERALL?



	Component Score	Scaled Score	Rating
Overall		88	B
Student Achievement		87	B
STAAR Performance	52	83	
College, Career and Military Readiness	57	86	
Graduation Rate	98.9	95	
School Progress		81	B
Academic Growth	69	79	C
Relative Performance (Eco Dis: 42.5%)	55	81	B
Closing the Gaps	88	89	B

District Name	Campus Name	Grades	Total Number of Students	Overall Grade/Rating	Overall Score	Student Achievement Score	Academic Growth Score	Relative Performance Score	Closing the Gaps Score	Dist. Reading	Dist. Math	Dist. Science	Dist. Soc Studies	Dist. Progress	Dist. Closing the Gap	Dist. Post-Sec Readiness
PFLUGERVILLE ISD			25269	B	88	87	79	81	89							N
PFLUGERVILLE ISD	PFLUGERVILLE High School	09 - 12	2053	Met Standard	85	87	78	78	81	Y	Y	Y	Y	Y	N	Y
PFLUGERVILLE ISD	JOHN B CONNALLY High School	09 - 12	1857	Met Standard	72	75	58	71	66	N	Y	Y	N	N	N	N
PFLUGERVILLE ISD	HENDRICKSON High School	09 - 12	2616	Met Standard	91	92	88	81	88	N	N	N	N	Y	Y	Y
PFLUGERVILLE ISD	WEISS High School	09 - 10	884	Met Standard	81	82	72	80	79	Y	N	Y		N	N	Y
PFLUGERVILLE ISD	TRAVIS CO JJAEP	09 - 12	3	Not Rated	.	.	.	.	.							
PFLUGERVILLE ISD	PFLUGERVILLE Middle School	06 - 08	1017	Met Standard	80	78	77	72	86	N	N	N	N	N	Y	N
PFLUGERVILLE ISD	WESTVIEW Middle School	06 - 08	801	Met Standard	74	72	70	75	72	N	N	N	N	N	N	N
PFLUGERVILLE ISD	PARK CREST Middle School	06 - 08	948	Met Standard	84	85	72	81	83	Y	N	Y	Y	N	N	Y
PFLUGERVILLE ISD	DESSAU Middle School	06 - 08	860	Met Standard	63	64	58	60	62	N	N	N	N	N	N	N
PFLUGERVILLE ISD	KELLY LANE Middle School	06 - 08	1078	Met Standard	90	91	80	70	87	N	N	N	N	N	N	N
PFLUGERVILLE ISD	CELE Middle School	06 - 08	1044	Met Standard	86	85	77	75	89	N	N	N	N	N	Y	N
PFLUGERVILLE ISD	PFLUGERVILLE E Elementary	EE - 05	453	Met Standard	86	83	83	79	92	N	N	N	N	Y	Y	N
PFLUGERVILLE ISD	PARMER LANE Elementary	EE - 05	500	Met Standard	93	90	88	88	100	Y	Y	Y		Y	Y	Y
PFLUGERVILLE ISD	TIMMERMAN Elementary	EE - 05	519	Met Standard	72	72	59	62	71	N	N	N		N	N	N
PFLUGERVILLE ISD	NORTHWEST Elementary	EE - 05	527	Met Standard	65	60	65	58	65	N	N	N		N	N	N
PFLUGERVILLE ISD	DESSAU Elementary	03 - 05	608	Met Standard	66	65	67	60	65	N	N	N		N	N	N
PFLUGERVILLE ISD	WINDERMERE Elementary	03 - 05	402	Met Standard	87	85	83	81	92	Y	N	Y		Y	Y	N
PFLUGERVILLE ISD	RIVER OAKS Elementary	EE - 05	560	Met Standard	84	76	83	82	87	N	N	Y		Y	Y	Y
PFLUGERVILLE ISD	BROOKHOLLOW Elementary	EE - 05	470	Met Standard	81	82	69	75	77	N	N	N		N	N	N
PFLUGERVILLE ISD	SPRINGHILL Elementary	EE - 05	597	Met Standard	87	75	86	74	88	N	N	N		Y	N	N
PFLUGERVILLE ISD	WINDERMERE Elementary	EE - 02	397	Met Standard	87	.	.	.	.							
PFLUGERVILLE ISD	COPPERFIELD Elementary	EE - 05	413	Met Standard	73	72	72	70	76	N	N	N		N	N	N
PFLUGERVILLE ISD	MURCHISON Elementary	EE - 05	814	Met Standard	91	92	85	69	89	N	N	N		N	N	N
PFLUGERVILLE ISD	DELCO Elementary	EE - 02	696	Met Standard	66	.	.	.	.							
PFLUGERVILLE ISD	CALDWELL Elementary	EE - 05	653	Met Standard	76	75	75	69	77	N	N	N		N	N	N
PFLUGERVILLE ISD	ROME LANE Elementary	EE - 05	790	Met Standard	93	92	83	75	96	Y	N	N		N	N	N
PFLUGERVILLE ISD	HIGHLANDPARK Elementary	EE - 05	641	Met Standard	94	92	83	83	100	Y	Y	N		N	Y	Y
PFLUGERVILLE ISD	WIELAND Elementary	EE - 05	435	Met Standard	80	77	80	77	79	N	Y	N		N	N	Y
PFLUGERVILLE ISD	RIOJAS Elementary	EE - 05	666	Met Standard	94	91	82	74	100	N	N	N		N	Y	N
PFLUGERVILLE ISD	RUTHBARRON Elementary	EE - 05	688	Met Standard	79	76	62	81	74	N	N	N		N	N	N
PFLUGERVILLE ISD	DEARING Elementary	EE - 05	574	Met Standard	77	77	69	70	77	N	N	N		N	N	N
PFLUGERVILLE ISD	MOTT Elementary	EE - 05	705	Met Standard	80	80	77	63	79	N	N	N		N	N	N



THE WAY TO KNOWLEDGE



TEST



KNOWLEDGE IS LIGHT

# Round Rock ISD

## Texas Education Agency 2018 Accountability Ratings Overall Summary ROUND ROCK ISD (246909)

### HOW WELL IS THIS DISTRICT PERFORMING OVERALL?



	Component Score	Scaled Score	Rating
Overall		90	A
Student Achievement		91	A
STAAR Performance	64	91	
College, Career and Military Readiness	69	92	
Graduation Rate	97.7	90	
School Progress		89	B
Academic Growth	75	89	B
Relative Performance (Eco Dis: 25.9%)	67	85	B
Closing the Gaps	93	89	B

#### Notes:

- This district did not receive an overall or domain rating of A because the district includes at least one campus with an overall or corresponding domain rating of Improvement Required. In this case, the district overall or corresponding domain scaled score is limited to an 89.

District Name	Campus Name	Grades	Total Number of Students	Overall Grade/Rating	Overall Score	Student Achievement Score	Academic Growth Score	Relative Performance Score	Closing the Gaps Score	Dist. Reading	Dist. Math	Dist. Science	Dist. Soc Studies	Dist. Progress	Dist. Closing the Gap	Dist. Post-Sec Readiness
ROUND ROCK ISD			48919	A	90	91	89	85	89							N
ROUND ROCK ISD	ROUND ROCK High School	09 - 12	3358	Met Standard	93	94	79	81	92	Y	Y	Y	N	N	Y	Y
ROUND ROCK ISD	ROUND ROCK OPPORT CTR DAEP	07 - 12	81	Not Rated	.	.	.	.	.							
ROUND ROCK ISD	WESTWOOD High School	09 - 12	2742	Met Standard	95	95	80	85	94	Y	Y	Y	Y	N	Y	Y
ROUND ROCK ISD	MONEIL High School	09 - 12	2663	Met Standard	89	93	70	82	80	Y	Y	Y	N	N	N	Y
ROUND ROCK ISD	STONY POINT High School	09 - 12	2604	Met Standard	81	84	59	76	73	N	Y	N	Y	N	N	Y
ROUND ROCK ISD	CEDAR RIDGE High School	09 - 12	2765	Met Standard	88	91	66	80	82	Y	N	Y	N	N	N	Y
ROUND ROCK ISD	SUCCESS High School	09 - 12	302	Met Alternative Standard	77	80	71	.	70							
ROUND ROCK ISD	WILLIAMSON COUNTY CORE-JJAP	07 - 11	6	Not Rated	.	.	.	.	.							
ROUND ROCK ISD	RRISD EARLY COLLEGE	09 - 10	220	Met Standard	89	91	68	86	85	N	N	N	N	N	N	N
ROUND ROCK ISD	WILLIAMSON COUNTY JUV. DET.	09 - 11	4	Not Rated	.	.	.	.	.							
ROUND ROCK ISD	C D FULKES Middle School	06 - 08	713	Met Standard	76	73	70	77	74	N	N	N	N	N	N	N
ROUND ROCK ISD	NOEL GRISHAM Middle School	06 - 08	655	Met Standard	91	91	83	81	91	Y	N	N	Y	N	N	N
ROUND ROCK ISD	CHISHOLM TRAIL Middle School	06 - 08	952	Met Standard	89	88	81	82	91	N	Y	Y	Y	Y	Y	Y
ROUND ROCK ISD	CANYON VISTA Middle School	06 - 08	1347	Met Standard	95	96	92	90	94	Y	Y	Y	Y	Y	N	Y
ROUND ROCK ISD	DEERPARK Middle School	06 - 08	900	Met Standard	82	82	80	75	82	Y	N	Y	N	Y	N	N
ROUND ROCK ISD	HOPEWELL Middle School	06 - 08	1114	Met Standard	88	89	79	80	86	N	Y	N	N	N	N	Y
ROUND ROCK ISD	CEDAR VALLEY Middle School	06 - 08	1276	Met Standard	96	94	90	86	100	Y	Y	N	Y	Y	Y	Y
ROUND ROCK ISD	RIDGEVIEW Middle School	06 - 08	1353	Met Standard	93	92	85	82	94	N	N	N	N	N	N	N
ROUND ROCK ISD	JAMES GARLAND WALSH Middle School	06 - 08	1460	Met Standard	97	95	92	89	100	Y	Y	Y	Y	Y	Y	Y
ROUND ROCK ISD	PFC ROBERT P HERNANDEZ Middle School	06 - 08	752	Met Standard	74	74	75	72	72	N	N	N	Y	N	N	N
ROUND ROCK ISD	PEARSON RANCH Middle School	06 - 08	667	Met Standard	91	93	88	82	85	Y	Y	N	Y	Y	N	Y
ROUND ROCK ISD	CLAUDE BERKMAN Elementary	PK - 05	476	Met Standard	78	72	72	80	73	N	N	N		N	N	N
ROUND ROCK ISD	EL DAEP	01 - 04	7	Not Rated	.	.	.	.	.							
ROUND ROCK ISD	SPICEWOOD Elementary	KG - 05	807	Met Standard	97	95	91	85	100	Y	N	Y		Y	Y	Y
ROUND ROCK ISD	XENIA VOIGT Elementary	EE - 05	529	Met Standard	64	62	60	62	67	N	N	N		N	N	N
ROUND ROCK ISD	DEEPWOOD Elementary	EE - 05	349	Met Standard	77	80	67	66	71	N	N	N		N	N	N
ROUND ROCK ISD	FOREST NORTH Elementary	EE - 05	346	Met Standard	70	72	60	60	64	N	N	N		N	N	N
ROUND ROCK ISD	ANDERSON MTLU Elementary	PK - 05	522	Met Standard	72	73	59	75	65	N	N	N		N	N	N
ROUND ROCK ISD	KATHY CARAWAY Elementary	EE - 05	819	Met Standard	96	94	90	84	100	Y	N	N		N	Y	Y
ROUND ROCK ISD	VIC ROBERTSON Elementary	PK - 05	430	Met Standard	74	71	75	73	72	N	N	N		N	N	N
ROUND ROCK ISD	PURPLE SAGE Elementary	EE - 05	439	Met Standard	84	85	80	72	80	N	N	N		N	N	N
ROUND ROCK ISD	BRUSHY CREEK Elementary	EE - 05	757	Met Standard	92	91	86	75	94	N	Y	N		Y	N	Y
ROUND ROCK ISD	WELLS BRANCH Elementary	EE - 05	474	Met Standard	78	73	79	72	76	N	N	N		Y	N	N
ROUND ROCK ISD	LAUREL MOUNTAIN Elementary	KG - 05	758	Met Standard	97	96	94	89	100	Y	Y	Y		Y	Y	Y
ROUND ROCK ISD	POND SPRINGS Elementary	EE - 05	637	Met Standard	85	89	72	72	76	Y	N	N		N	N	N
ROUND ROCK ISD	BLUEBONNET Elementary	PK - 05	369	Met Standard	61	64	57	67	48	N	N	N		N	N	N
ROUND ROCK ISD	DOUBLE FILE TRAIL Elementary	EE - 05	628	Met Standard	85	78	83	69	88	N	N	N		Y	N	N
ROUND ROCK ISD	LIVE OAK Elementary	EE - 05	536	Met Standard	76	77	72	66	73	N	N	Y		N	N	N
ROUND ROCK ISD	GATTIS Elementary	EE - 05	736	Met Standard	73	73	67	60	74	N	N	N		N	N	N
ROUND ROCK ISD	OLD TOWN Elementary	PK - 05	749	Met Standard	83	86	72	75	77	N	N	N		N	N	N
ROUND ROCK ISD	FERN BLUFF Elementary	KG - 05	617	Met Standard	91	93	90	77	85	Y	N	Y		Y	N	N
ROUND ROCK ISD	JOLLYVILLE Elementary	EE - 05	452	Met Standard	80	78	79	70	82	N	N	N		N	N	N
ROUND ROCK ISD	CANYON CREEK Elementary	KG - 05	429	Met Standard	98	97	94	91	100	Y	Y	Y		Y	Y	Y
ROUND ROCK ISD	FOREST CREEK Elementary	KG - 05	832	Met Standard	94	91	83	67	100	N	N	N		N	Y	N
ROUND ROCK ISD	CALDWELL HEIGHTS Elementary	EE - 05	736	Met Standard	76	75	75	75	78	N	N	N		N	N	N
ROUND ROCK ISD	GREAT OAKS Elementary	EE - 05	715	Met Standard	92	93	85	78	88	N	N	Y		N	N	Y
ROUND ROCK ISD	JOE LEE JOHNSON Elementary	KG - 05	729	Met Standard	70	71	62	58	68	N	N	N		N	N	N
ROUND ROCK ISD	BLACKLAND PRAIRIE Elementary	EE - 05	799	Met Standard	94	92	89	75	100	N	N	N		Y	Y	N
ROUND ROCK ISD	TERAVISTA Elementary	EE - 05	866	Met Standard	93	92	85	77	96	N	N	Y		N	Y	Y
ROUND ROCK ISD	CACTUS RANCH Elementary	EE - 05	974	Met Standard	97	96	93	87	100	Y	Y	Y		Y	Y	Y
ROUND ROCK ISD	PATSY SOMMER Elementary	EE - 05	1235	Met Standard	97	95	92	85	100	Y	Y	Y		Y	Y	Y
ROUND ROCK ISD	CHANDLER OAKS Elementary	KG - 05	559	Met Standard	94	92	82	74	100	N	N	N		N	Y	N
ROUND ROCK ISD	NEVSA CALLISON Elementary	EE - 05	803	Met Standard	74	72	74	70	73	N	N	N		N	N	N
ROUND ROCK ISD	UNION HILL Elementary	EE - 05	729	Met Standard	86	75	88	80	82	N	Y	N		Y	N	N
ROUND ROCK ISD	LINDA HERRINGTON Elementary	EE - 05	1039	Met Standard	95	93	92	84	100	Y	Y	Y		Y	Y	Y
ROUND ROCK ISD	ELSA ENGLAND Elementary	PK - 05	1103	Met Standard	92	94	88	82	88	N	N	N		N	N	N

# San Marcos ISD

## Texas Education Agency 2018 Accountability Ratings Overall Summary SAN MARCOS CISD (105902)

HOW WELL IS THIS DISTRICT  
PERFORMING OVERALL?



	Component Score	Scaled Score	Rating
Overall		72	C
Student Achievement		72	C
STAAR Performance	40	70	
College, Career and Military Readiness	45	74	
Graduation Rate	92.1	70	
School Progress		76	C
Academic Growth	62	59	F
Relative Performance (Eco Dis: 68.6%)	43	76	C
Closing the Gaps	20	63	D

District Name	Campus Name	Grades	Total Number of Students	Overall Grade/Rating	Overall Score	Student Achievement Score	Academic Growth Score	Relative Performance Score	Closing the Gaps Score	Dist. Reading	Dist. Math	Dist. Science	Dist. Soc Studies	Dist. Progress	Dist. Closing the Gap	Dist. Post-Sec Readiness
SAN MARCOS CISD			8167	C	72	72	59	76	63							N
SAN MARCOS CISD	SAN MARCOS High School	09 - 12	2331	Met Standard	71	73	59	73	65	N	N	N	N	N	N	N
SAN MARCOS CISD	GOODNIGHT Middle School	06 - 08	1005	Met Standard	72	70	59	75	66	N	N	N	N	N	N	N
SAN MARCOS CISD	MILLER Middle School	06 - 08	782	Met Standard	67	70	55	69	59	N	N	N	Y	N	N	N
SAN MARCOS CISD	BOWIE Elementary	KG - 05	558	Met Standard	71	67	69	67	74	N	N	N		N	N	N
SAN MARCOS CISD	CROCKETT Elementary	KG - 05	624	Met Standard	79	79	74	80	75	Y	N	N		N	N	Y
SAN MARCOS CISD	DEZAVALA Elementary	KG - 05	602	Met Standard	74	60	75	63	73	N	N	N		N	N	N
SAN MARCOS CISD	TRAVIS Elementary	KG - 05	662	Met Standard	65	57	65	58	64	N	N	N		N	N	N
SAN MARCOS CISD	HERNANDEZ Elementary	KG - 05	594	Met Standard	78	75	74	78	77	N	N	N		N	N	N
SAN MARCOS CISD	MENDEZ Elementary	KG - 05	588	Met Standard	71	67	69	72	68	N	N	N		N	N	N
SAN MARCOS CISD	BONHAM PRE-K SCHOOL	EE - PK	421	Met Standard	79	.	.	.	.							

# Smithville ISD

## Texas Education Agency 2018 Accountability Ratings Overall Summary SMITHVILLE ISD (011904)

HOW WELL IS THIS DISTRICT  
PERFORMING OVERALL?



	Component Score	Scaled Score	Rating
Overall		71	C
Student Achievement		76	C
STAAR Performance	43	74	
College, Career and Military Readiness	38	69	
Graduation Rate	100	95	
School Progress		71	C
Academic Growth	66	70	C
Relative Performance (Eco Dis: 59.9%)	41	71	C
Closing the Gaps	15	60	D

District Name	Campus Name	Grades	Total Number of Students	Overall Grade/Rating	Overall Score	Student Achievement Score	Academic Growth Score	Relative Performance Score	Closing the Gaps Score	Dist. Reading	Dist. Math	Dist. Science	Dist. Soc Studies	Dist. Progress	Dist. Closing the Gap	Dist. Post-Sec Readiness
SMITHVILLE ISD			1781	C	71	76	70	71	60							N
SMITHVILLE ISD	SMITHVILLE High School	09 - 12	541	Met Standard	72	75	68	69	65	N	N	N	N	N	N	N
SMITHVILLE ISD	SMITHVILLE Junior High	06 - 08	410	Met Standard	77	75	69	79	71	N	N	N	N	N	N	N
SMITHVILLE ISD	SMITHVILLE Elementary	03 - 05	404	Met Standard	69	72	70	70	62	N	N	Y		N	N	N
SMITHVILLE ISD	BROWN Elementary	EE - 02	426	Met Standard	69	.	.	.	.							



LEARN

# Taylor ISD

## HOW WELL IS THIS DISTRICT PERFORMING OVERALL?



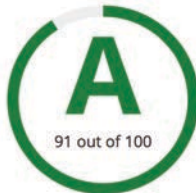
## Texas Education Agency 2018 Accountability Ratings Overall Summary TAYLOR ISD (246911)

	Component Score	Scaled Score	Rating
Overall		79	C
Student Achievement		77	C
STAAR Performance	39	69	
College, Career and Military Readiness	54	82	
Graduation Rate	95	85	
School Progress		80	B
Academic Growth	63	60	D
Relative Performance (Eco Dis: 63.5%)	47	80	B
Closing the Gaps	48	75	C

District Name	Campus Name	Grades	Total Number of Students	Overall Grade/Rating	Overall Score	Student Achievement Score	Academic Growth Score	Relative Performance Score	Closing the Gaps Score	Dist. Reading	Dist. Math	Dist. Science	Dist. Soc Studies	Dist. Progress	Dist. Closing the Gap	Dist. Post-Sec Readiness
TAYLOR ISD			3190	C	79	77	60	80	75							N
TAYLOR ISD	TAYLOR High School	09 - 12	1016	Met Standard	79	80	65	78	77	Y	N	N	Y	N	N	N
TAYLOR ISD	WILLIAMSON CO JJAEP	09 - 10	4	Not Rated	.	.	.	.	.							
TAYLOR ISD	LOTT JUVENILE DETENTION CTR	09 - 11	5	Not Rated	.	.	.	.	.							
TAYLOR ISD	TAYLOR Middle School	06 - 08	710	Met Standard	63	64	57	59	61	N	N	N	N	N	N	N
TAYLOR ISD	MAIN STREET INT Elementary	04 - 05	427	Met Standard	79	72	79	74	78	N	N	N		Y	Y	N
TAYLOR ISD	NAOMI PASEMANN Elementary	01 - 03	657	Met Standard	67	67	.	66	67	Y	N				N	N
TAYLOR ISD	TH JOHNSON Elementary	EE - KG	371	Met Standard	67	.	.	.	.							

# Wimberley ISD

## HOW WELL IS THIS DISTRICT PERFORMING OVERALL?



## Texas Education Agency 2018 Accountability Ratings Overall Summary WIMBERLEY ISD (105905)

	Component Score	Scaled Score	Rating
Overall		91	A
Student Achievement		91	A
STAAR Performance	57	87	
College, Career and Military Readiness	71	93	
Graduation Rate	98.3	95	
School Progress		84	B
Academic Growth	72	84	B
Relative Performance (Eco Dis: 25.8%)	64	81	B
Closing the Gaps	90	91	A

District Name	Campus Name	Grades	Total Number of Students	Overall Grade/Rating	Overall Score	Student Achievement Score	Academic Growth Score	Relative Performance Score	Closing the Gaps Score	Dist. Reading	Dist. Math	Dist. Science	Dist. Soc Studies	Dist. Progress	Dist. Closing the Gap	Dist. Post-Sec Readiness
WIMBERLEY ISD			2437	A	91	91	84	81	91							N
WIMBERLEY ISD	WIMBERLEY High School	09 - 12	739	Met Standard	87	90	70	75	79	N	N	Y	Y	N	N	N
WIMBERLEY ISD	DANFORTH Junior High	06 - 08	627	Met Standard	89	89	84	70	89	N	N	N	N	N	N	N
WIMBERLEY ISD	JACOB'S WELL Elementary	02 - 05	678	Met Standard	80	82	72	69	76	Y	N	N		N	N	N
WIMBERLEY ISD	SCUDDER Elementary	EE - 01	393	Met Standard	80	.	.	.	.							



WISDOM



# Austin Private School Guide

[www.austintitle.com](http://www.austintitle.com)

## Pre-Kindergarten & Kindergarten Only

### ABACUS SCHOOL OF AUSTIN

14115 AVERY RANCH BLVD  
AUSTIN, TX 78717 - 512.381.2200  
[www.abacusschoolofaustin.com](http://www.abacusschoolofaustin.com)  
Enrollment: 69  
Teachers (FTE): 49.0  
Student/teacher ratio: 0.37  
Religious orientation: Nonsectarian

### ALL SAINTS' EPISCOPAL SCHOOL

209 W 27TH ST, AUSTIN, TX 78705  
512.472.8866  
<http://allsaints-austin.org/organizations/65>  
Enrollment: 78  
Teachers (FTE): 2.0  
Student/teacher ratio: 12.50  
Religious orientation: Episcopal

### ARBOR MONTESSORI ACADEMY

11726 JOLLYVILLE RD  
AUSTIN, TX 78759 - 512.250.3669  
[www.thearborschool.com](http://www.thearborschool.com)  
Religious orientation: Nonsectarian  
School type/program emphasis: Montessori

### AUSTIN CHILDREN'S ACADEMY

12310 RANCH ROAD 620 N  
AUSTIN, TX 78750 - 512.3331.2075  
[www.austinchildrensacademy.org](http://www.austinchildrensacademy.org)  
Religious orientation: Nonsectarian  
School type/program emphasis: Montessori

### AUSTIN CHILDREN'S MONTESSORI

8807 MANCHACA RD  
AUSTIN, TX 78748 - 512.291.5522  
<http://montessoriaustin.com>  
Enrollment: 45  
Teachers (FTE): 4.8  
Student/teacher ratio: 3.54  
Religious orientation: Nonsectarian  
School type/program emphasis: Montessori

### AUSTIN ECO BILINGUAL SCHOOL (JARDIN DE NINOS)-NORTH

2700 W ANDERSON LN  
AUSTIN, TX 78757 - 512.299.5732  
[www.austinbilingualschool.com](http://www.austinbilingualschool.com)  
Enrollment: 26  
Teachers (FTE): 2.0  
Student/teacher ratio: 3.5  
Religious orientation: Nonsectarian  
School type/program emphasis: Special Program Emphasis

### AUSTIN ECO BILINGUAL SCHOOL (JARDIN DE NINOS)-SOUTH 8707 MOUNTAIN CREST DR.

AUSTIN, TX 78735 - 512.299.5731  
[www.austinbilingualschool.com](http://www.austinbilingualschool.com)  
Enrollment: NA  
Religious orientation: Nonsectarian  
School type/program emphasis: Special Program Emphasis

### CASA MONTESSORI CHILD DEVELOPMENT CENTER

404B ATLANTA ST - AUSTIN, TX 78767  
512.474.4119  
<http://casa-montessori.org>  
Enrollment: 81  
Teachers (FTE): 3.0  
Student/teacher ratio: 6.00  
Religious orientation: Nonsectarian  
School type/program emphasis: Montessori

### THE FELLOWSHIP CHRISTIAN ACADEMY

3379 GATTIS SCHOOL RD  
ROUND ROCK, TX 78664  
512.255.5265  
<http://thefellowshippr.org/academy/>  
Religious orientation: Christian  
(no specific denomination)

### GOOD SHEPHERD EPISCOPAL

2206 EXPOSITION BLVD  
AUSTIN, TX 78703 - 512.476.4393  
[www.goodshepherdschoolaustin.org](http://www.goodshepherdschoolaustin.org)  
Enrollment: 154  
Teachers (FTE): 1.6  
Student/teacher ratio: 18.13  
Religious orientation: Episcopal

### HAWTHORNE MONTESSORI

1414 KRAMER LN, AUSTIN, TX 78758  
512.821.9900  
[www.hawthornemontessori.com](http://www.hawthornemontessori.com)  
Enrollment: 79  
Teachers (FTE): 1.0  
Student/teacher ratio: 11.00  
Religious orientation: Nonsectarian  
School type/program emphasis: Montessori

### KIDS R KIDS LEARNING ACADEMY

15111 AVERY RANCH BLVD  
AUSTIN, TX 78717 - 512.218.9669  
[www.krkaustin.com](http://www.krkaustin.com)  
Enrollment: 199  
Teachers (FTE): 1.0  
Student/teacher ratio: 12.00  
Religious orientation: Nonsectarian

### LAKE HILLS MONTESSORI AUSTIN CAMPUS

600 N CUERNAVACA DR  
AUSTIN, TX 78733 - 512.263.9342  
<http://austin.lakehillsmontessori.com>  
Enrollment: 85  
Teachers (FTE): 1  
Student/teacher ratio: 7.89  
Religious orientation: Nonsectarian  
School type/program emphasis: Montessori

### LAKE HILLS MONTESSORI BEE CAVE

3930 RANCH ROAD 620 S  
AUSTIN, TX 78738 - 512.263.5585  
<http://beecave.lakehillsmontessori.com>  
Enrollment: 125  
Teachers (FTE): 5.4  
Student/teacher ratio: 4.63  
Religious orientation: Nonsectarian  
School type/program emphasis: Montessori

### THE MONTESSORI CENTER 4108 AVENUE H

AUSTIN, TX 78751 - 512.451.5081  
[www.themontessoricenter.com](http://www.themontessoricenter.com)  
Enrollment: 49  
Teachers (FTE): 2.0  
Student/teacher ratio: 1.00  
Religious orientation: Nonsectarian  
School type/program emphasis: Montessori

### MOUNT SINAI CHRISTIAN ACADEM

5900 CAMERON RD - AUSTIN, TX 78723  
512.451.3185  
[www.ms-ca.org](http://www.ms-ca.org)  
Religious orientation: Christian (no specific denomination)

### NORTH AUSTIN MONTESSORI SCHOOL

12400 AMHERST DR, AUSTIN, TX 78727  
512.833.8877  
[www.nams-ami.com](http://www.nams-ami.com)  
Religious orientation: Nonsectarian  
School type/program emphasis: Montessori

### NORTHWEST MONTESSORI HOUSE OF CHILDREN

1903 W KOENIG LN, AUSTIN, TX 78756  
512.451.6134  
[www.nwmontessori.net](http://www.nwmontessori.net)  
Religious orientation: Nonsectarian  
School type/program emphasis: Montessori

### PFLUGERVILLE MONTESSORI SCHOOL

2500 W PECAN ST  
PFLUGERVILLE, TX 78660  
512.251.0428  
<http://pflugervillmontessori.com>  
Religious orientation: Nonsectarian  
School type/program emphasis: Montessori

### PRIMROSE SCHOOL OF BEE CAVE 3801 JUNIPER TRACE

AUSTIN, TX 78738 - 512.263.0388  
[www.primroseschools.com](http://www.primroseschools.com)  
Enrollment: 149  
Teachers (FTE): 1.0  
Student/teacher ratio: 11.00  
Religious orientation: Nonsectarian

### PRIMROSE SCHOOL OF FOUR POINTS

6606 SITIO DEL RIO BLVD  
AUSTIN, TX 78730 - 512.795.9101  
[www.primroseschools.com](http://www.primroseschools.com)  
Enrollment: 151  
Teachers (FTE): 1.4  
Student/teacher ratio: 7.86  
Religious orientation: Nonsectarian

**PRIMROSE SCHOOL OF RR**

15925 S GREAT OAKS DR  
ROUND ROCK, TX 78681  
512.733.2020  
www.primroseschools.com  
Enrollment: 52  
Teachers (FTE): 1.0  
Student/teacher ratio: 12.00  
Religious orientation: Nonsectarian

**PRIMROSE SCHOOL OF ROUND  
ROCK AT FOREST CREEK**

3313 FOREST CREEK DR  
ROUND ROCK, TX 78664  
512.828.5777  
www.primroseschools.com  
Enrollment: 11  
Teachers (FTE): 1.0  
Student/teacher ratio: 11.00  
Religious orientation: Nonsectarian

**PRIMROSE SCHOOL OF SHADY  
HOLLOW**

12341 BRODIE LN, AUSTIN, TX 78748  
512.282.2341  
www.primroseschools.com  
Enrollment: 138  
Teachers (FTE): 2.0  
Student/teacher ratio: 12.00  
Religious orientation: Nonsectarian

**RAINBOW STATION**

11651 W PARMER LN  
CEDAR PARK, TX 78613 - 512.260.9700  
www.rainbowstation.org

**SAINT JAMES EPISCOPAL SCHOOL  
1941 WEBBERVILLE ROAD**

AUSTIN, TX 78721  
512.926.4214  
www.stjamesepiscopalschool.org  
Religious orientation: Episcopal  
School type/program emphasis: Montessori

**SAINT MARTIN'S LUTHERAN  
SCHOOL**

606 W 15TH ST, AUSTIN, TX 78701  
512.476.4037  
www.saintmartins.org  
Religious orientation: Evangelical Lutheran

**SAINT MATTHEW'S EPISCOPAL  
SCHOOL**

8134 MESA DR, AUSTIN, TX 78759  
512.345.3040  
www.stmatthewsschoolaustin.com  
Enrollment: 184  
Teachers (FTE): 3.0  
Student/teacher ratio: 7.00  
Religious orientation: Episcopal

**SAN MARCOS MONTESSORI  
SCHOOL**

406 HARVEY ST  
SAN MARCOS, TX 78666  
512.353.8340  
http://sanmarcosmontessori.com  
Religious orientation: Nonsectarian  
School type/program emphasis: Montessori

**SHORELINE CHRISTIAN SCHOOL**

15201 BURNET RD, AUSTIN, TX 78728  
512.681.3255  
www.scs1.org  
Enrollment: 120  
Teachers (FTE): 1.1  
Student/teacher ratio: 5.45  
Religious orientation: Christian (no specific denomination)

**SUNRISE MONTESSORI PRESCHOOL**

104/106 NORTHWEST DR  
ROUND ROCK, TX 78664  
512.341.2883  
www.sunrise-montessori.com

Religious orientation: Nonsectarian  
School type/program emphasis: Montessori

**TWIN OAKS MONTESSORI CASA DE  
BAMBINI**

7804 NORTHWEST DR  
AUSTIN, TX 78757 - 512.467.8885  
www.twinoaksmontessori.com  
Religious orientation: Nonsectarian  
School type/program emphasis: Montessori

**WHITE BIRD MONTESSORI SCHOOL**

9000 MANCHACA RD  
AUSTIN, TX 78748 - 512.291.0090  
http://whitebirdmontessori.com  
Religious orientation: Nonsectarian  
School type/program emphasis: Montessori

**XPLOR OF AUSTIN (CIRCLE C)  
5915 LA CROSSE AVE**

AUSTIN, TX 78739 - 512.288.0061  
www.xplortoday.co-  
Enrollment: 82  
Teachers (FTE): 2.9  
Student/teacher ratio: 12.76  
Religious orientation: Nonsectarian

## Elementary & Middle School

**AHB COMMUNITY SCHOOL**

4001 SPEEDWAY  
AUSTIN, TX 78751 - 512.299.5487  
www.ahbcs.org  
Grade span: KG-5  
Enrollment: 59  
Teachers (FTE): 2.0  
Student/teacher ratio: 29.5  
Religious orientation: Nonsectarian  
School type/program emphasis: Alternative/other

**ABERCORN INTERNATIONAL-  
SCHOOL**

601 RR 620 S, LAKEWAY, TX 78734  
512.263.8160  
www.abercorninternational.com  
Grade span: PK-5  
School type/program emphasis: International  
Baccalaureate  
Primary Years Program & the National Curriculum (England)

**APPLEGATE ADVENTIST JR  
ACADEMY**

4 APPLGATE CIR  
ROUND ROCK, TX 78665  
512.388.7870  
http://aaja-tx.org  
Grade span: KG-7  
Enrollment: 7  
Teachers (FTE): 1.0  
Student/teacher ratio: 7  
Religious orientation: Seventh-Day Adventist

**AUSTIN ECOSCHOOL**

4105 MANCHACA RD  
AUSTIN, TX 78704 - 512.447.8516  
www.austin-ecoschool.org  
Grade span: KG-8  
Enrollment: 24  
Teachers (FTE): 3.6  
Student/teacher ratio: 6.67  
Religious orientation: Nonsectarian  
School type/program emphasis: Alternative/other

**AUSTIN INTERNATIONAL SCHOOL**

4001 ADELPHI LN, AUSTIN, TX 78727  
512.331.7806  
www.austininternationalschool.org

Grade span: PK-5  
Enrollment: 189  
Teachers (FTE): 17.9  
Student/teacher ratio: 8.21  
Religious orientation: Nonsectarian  
School type/program emphasis: Special Program Emphasis

**AUSTIN JEWISH ACADEMY**

7300 HART LN, AUSTIN, TX 78731  
512.735.8350  
http://austinjewishacademy.org  
Grade span: KG-8  
Enrollment: 119  
Teachers (FTE): 16.9  
Student/teacher ratio: 7.04  
Religious orientation: Jewish

**AUSTIN MONTESSORI SCHOOL**

5006 SUNSET TRAIL, AUSTIN, TX 78745  
512.892.0253  
www.austinmontessori.com  
Grade span: PK-9  
Enrollment: 350  
Teachers (FTE): 18.5  
Student/teacher ratio: 12.43  
Religious orientation: Nonsectarian  
School type/program emphasis: Montessori  
Tuition: \$8,750-\$12,225

**AUSTIN MONTESSORI SCHOOL,  
GREAT NORTHERN CAMPUS**

6817 GREAT NORTHERN BLVD  
AUSTIN, TX 78757 - 512.892.0253  
www.austinmontessori.com  
Grade span: -  
Religious orientation: Nonsectarian  
School type/program emphasis: Montessori

**AUSTIN MONTESSORI SCHOOL-  
GAINS CREEK CAMPUS**

5677 OAK BLVD, AUSTIN, TX 78735  
512.892.0253  
www.austinmontessori.com  
Grade span: -  
Religious orientation: Nonsectarian  
School type/program emphasis: Montessori

**BANNOCKBURN CHRISTIAN  
ACADEMY**

7100 BRODIE LN, AUSTIN, TX 78745  
512.892.2706  
www.bcaAustin.org  
Grade span: PK-8  
Enrollment: 138  
Teachers (FTE): 16.5  
Student/teacher ratio: 6.79  
Religious orientation: Baptist

**BLUEBONNET MONTESSORI  
SCHOOL OF LAKEWAY**

15099 DEBBA DR, AUSTIN, TX 78734  
512.266.6626  
www.bluebonnetmontessori.com  
Grade span: All Ungraded-All Ungraded  
Enrollment: 62  
Teachers (FTE): 2.4  
Student/teacher ratio: 25.83  
Religious orientation: Nonsectarian  
School type/program emphasis: Montessori

**CALVARY EPISCOPAL SCHOOL**

603 SPRING ST., BASTROP, TX 78602  
512.321.1610  
www.calvaryschool.net  
Grade span: PK-5  
Enrollment: 84  
Teachers (FTE): 5.0  
Student/teacher ratio: 11.00  
Religious orientation: Episcopal

**CAPITOL SCHOOL OF AUSTIN**

2011 W KOENIG LN, AUSTIN, TX 78756  
512.467.7006  
www.capitolschool.com  
Grade span: PK-4  
Enrollment: 51  
Teachers (FTE): 8.9  
Student/teacher ratio: 3.48  
Religious orientation: Nonsectarian  
School type/program emphasis: Special Ed

**CASNER CHRISTIAN ACADEMY**

3838 STECK AVE, AUSTIN, TX 78759  
512.453.6605  
www.casnerchristian.org  
Grade span: PK-1  
Enrollment: 108  
Teachers (FTE): 4.0  
Student/teacher ratio: 13.00  
Religious orientation: Baptist

**CATHEDRAL SCHOOL OF ST MARY**

910 SAN JACINTO BLVD  
AUSTIN, TX 78701 - 512.476.1480  
www.smcschoolaustin.org  
Grade span: PK-8  
Enrollment: 138  
Teachers (FTE): 9.3  
Student/teacher ratio: 10.86  
Religious orientation: Roman Catholic

**CEDAR PARK MONTESSORI SCHOOL**

400 E WHITESTONE BLVD  
CEDAR PARK, TX 78613  
512.259.8495  
www.cedarparkmontessori.com  
Grade span: PK-6  
Enrollment: 111  
Teachers (FTE): 3.0  
Student/teacher ratio: 15.33  
Religious orientation: Nonsectarian  
School type/program emphasis: Montessori

**CEDARS MONTESSORI SCHOOL**

9704 CIRCLE DR, AUSTIN, TX 78736  
512.288.1245  
www.cedarsmontessori.com  
Grade span: PK-6  
Enrollment: 200  
Teachers (FTE): 6.0  
Student/teacher ratio: 18.33  
Religious orientation: Nonsectarian  
School type/program emphasis: Montessori

**CENTURY CHRISTIAN ACADEMY**

14400 IMMANUEL RD  
PFLUGERVILLE, TX 78660 -512.989.3698  
www.covenantcommunity-  
schools.org/our-schools/centurychris-  
tian-academy/  
Grade span: 4-11  
Enrollment: 8  
Teachers (FTE): 2.0  
Student/teacher ratio: 4.00  
Religious orientation: Christian (no specific denomination)



**THE CHILDREN'S SCHOOL**  
2825 HANCOCK DR, AUSTIN, TX 78731  
512.453.1126  
<http://thechildrensschool.org/>  
Grade span: PK-2  
Enrollment: 175  
Teachers (FTE): 3.0  
Student/teacher ratio: 15.00  
Religious orientation: Nonsectarian  
School type/program emphasis: Montessori

**CITY SCHOOL**  
1844 TERI RD, AUSTIN, TX 78744  
512.416.7744  
[www.cityschooltexas.com](http://www.cityschooltexas.com)  
Grade span: PK-6  
Enrollment: 86  
Teachers (FTE): 8.9  
Student/teacher ratio: 8.31  
Religious orientation: Presbyterian

**COMMUNITY MONTESSORI SCHOOL**  
500 PLEASANT VALLEY DR  
GEORGETOWN, TX 78626  
512.863.7920  
<http://community-montessori.org>  
Grade span: PK-6  
Enrollment: 133  
Teachers (FTE): 6.0  
Student/teacher ratio: 9.83  
Religious orientation: Nonsectarian  
School type/program emphasis: Montessori

**GIRLS' SCHOOL OF AUSTIN**  
2007 MCCALL RD, AUSTIN, TX 78703  
512.478.7827  
[www.thegirlsschool.org](http://www.thegirlsschool.org)  
Grade span: KG-8  
Enrollment: 140  
Teachers (FTE): 13.4  
Student/teacher ratio: 10.45  
Religious orientation: Nonsectarian

**GREATER CALVARY ACADEMY**  
6510 BERKMAN DR, AUSTIN, TX 78723  
512.454.6170  
[www.greatercalvaryschools.net](http://www.greatercalvaryschools.net)  
Grade span: PK-5  
Enrollment: 12  
Teachers (FTE): 2.0  
Student/teacher ratio: 4.00  
Religious orientation: Christian (no specific denomination)

**HEBREW ACADEMY PREPARATORY SCHOOL OF AUSTIN**  
2127 W PARMER LN, AUSTIN, TX 78727  
512.977.0770  
[www.hebrewprepschool.com](http://www.hebrewprepschool.com)  
Grade span: PK-5  
Religious orientation: Jewish  
Tuition: \$4,500-\$10,000

**HOLY FAMILY CATHOLIC SCHOOL**  
9400 NEENAH AVE, AUSTIN, TX 78717  
512.246.4455  
[www.holyfamilycs.org](http://www.holyfamilycs.org)  
Grade span: PK-8  
Enrollment: 490  
Teachers (FTE): 28.0  
Student/teacher ratio: 16.07  
Religious orientation: Roman Catholic  
Tuition: \$6,250-\$7,450

**HOLY WORD CHRISTIAN ACADEMY**  
10601 BLUFF BEND DR  
AUSTIN, TX 78753 - 512.836.0660  
[www.holyword.net](http://www.holyword.net)  
Grade span: KG-8  
Enrollment: 32  
Teachers (FTE): 4.3  
Student/teacher ratio: 7.44  
Religious orientation: Wisconsin Evangelical Lutheran Synod

**INTERNATIONAL SCHOOL OF TEXAS**  
4402 HUDSON BEND  
AUSTIN, TX 78734 - 512.351.3403  
[www.internationalschooloftexas.com](http://www.internationalschooloftexas.com)  
Grade span: KG-8  
Religious orientation: Nonsectarian  
School type/program emphasis: International Baccalaureate & the UK National Curriculum

**J. L. SMITH ACADEMY**  
11530 MANCHACA RD  
AUSTIN, TX 78748  
512.282.7739  
[www.smithacademyaustin.com](http://www.smithacademyaustin.com)  
Grade span: PK-5  
Religious orientation: Christian (no specific denomination)  
School type/program emphasis: Special Program Emphasis

**THE JOULE SCHOOL**  
7200 A CREEKSIDE DR  
AUSTIN, TX 78752  
[www.jouleschool.com](http://www.jouleschool.com)  
Grade span: PK-6  
Enrollment: 6  
Teachers (FTE): 1.0  
Student/teacher ratio: 3.00  
Religious orientation: Nonsectarian  
School type/program emphasis: Special Program Emphasis

**KINGDOM HEIGHTS CHRISTIAN SCHOOL**  
14 CHISHOLM TRL  
ROUND ROCK, TX 78681  
512.255.7676  
[www.covenantcommunityschools.org](http://www.covenantcommunityschools.org)  
Grade span: PK-6  
Enrollment: 56  
Teachers (FTE): 2.9  
Student/teacher ratio: 7.24  
Religious orientation: Christian (no specific denomination)

**KIRBY HALL SCHOOL**  
306 W 29TH ST, AUSTIN, TX 78705  
512.474.1770  
[www.khs.com](http://www.khs.com)  
Grade span: KG-11  
Enrollment: 81  
Teachers (FTE): 13.3  
Student/teacher ratio: 6.09  
Religious orientation: Nonsectarian  
School type/program emphasis: Special Program Emphasis

**LOCKHART MONTESSORI SCHOOL**  
610 WESTWOOD RD  
LOCKHART, TX 78644  
512.398.5745  
[www.lockhartmontessori.com](http://www.lockhartmontessori.com)  
Grade span: PK-4  
Enrollment: 35  
Teachers (FTE): 1.1  
Student/teacher ratio: 14.55  
Religious orientation: Nonsectarian  
School type/program emphasis: Montessori

**THE MAGELLAN INTERNATIONAL**  
7938 GREAT NORTHERN BLVD  
AUSTIN, TX 78757 - 512.782.2327  
[www.magellanschool.org](http://www.magellanschool.org)  
Grade span: PK-8  
Enrollment: 389  
Teachers (FTE): 26.3  
Student/teacher ratio: 9.58  
Religious orientation: Nonsectarian  
School type/program emphasis: Special Program Emphasis

**MARIPOSA MONTESSORI SCHOOL**  
7809 BRODIE LN, AUSTIN, TX 78745  
512.428.4280  
[www.mariposamontessori.com](http://www.mariposamontessori.com)  
Grade span: PK-2  
Enrollment: 86  
Teachers (FTE): 4.0  
Student/teacher ratio: 6.5.00  
Religious orientation: Nonsectarian  
School type/program emphasis: Montessori

**THE MASTER'S SCHOOL**  
1664 CENTER POINT RD  
SAN MARCOS, TX 78666  
512.392.4322  
[www.mastersschool.org](http://www.mastersschool.org)  
Grade span: KG-8  
Enrollment: 133  
Teachers (FTE): 16.8  
Student/teacher ratio: 7.92  
Religious orientation: Christian (no specific denomination)

**NORTH AUSTIN MONTESSORI**  
12400 AMHERST DR, SUITE 120  
AUSTIN, TX 78727 - 512.833.8877  
[www.nams-ami.com](http://www.nams-ami.com)  
Grade span: PK-1  
Enrollment: 45  
Teachers (FTE): 4.3  
Student/teacher ratio: 4.65  
Religious orientation: Nonsectarian  
School type/program emphasis: Montessori

**OUR SAVIOR LUTHERAN SCHOOL**  
1513 E YAGER LN, AUSTIN, TX 78753  
512.836.9600  
[www.oslaustin.org](http://www.oslaustin.org)  
Grade span: PK-5  
Enrollment: 57  
Teachers (FTE): 3.4  
Student/teacher ratio: 7.35  
Religious orientation: Lutheran Church – Missouri Synod

**PARAGON PREPARATORY SCHOOL**  
2001 W KOENIG LN, AUSTIN, TX 78756  
512.459.5040  
[www.paragonprep.com](http://www.paragonprep.com)  
Grade span: PK-8  
Enrollment: 217  
Teachers (FTE): 17.6  
Student/teacher ratio: 12.33  
Religious orientation: Nonsectarian  
School type/program emphasis: Special Program Emphasis  
Tuition: \$13,832

**PARKSIDE COMMUNITY SCHOOL**  
1701 TOOMEY RD, AUSTIN, TX 78704  
512.472.2559  
[www.parksidecommunityschool.org](http://www.parksidecommunityschool.org)  
Grade span: PK-6  
Enrollment: 141  
Teachers (FTE): 12.0  
Student/teacher ratio: 8.00  
Religious orientation: Nonsectarian  
School type/program emphasis: Montessori

**RAWSON-SAUNDERS-AUSTIN AREA SCHOOL FOR DYSLEXICS**  
2614A EXPOSITION BLVD  
AUSTIN, TX 78703 - 512.476.8382  
[www.rawson-saunders.org](http://www.rawson-saunders.org)  
Grade span: 1-10  
Enrollment: 160  
Teachers (FTE): ---  
Student/teacher ratio: 3.22  
Religious orientation: Nonsectarian  
School type/program emphasis: Special Ed



**REDEEMER LUTHERAN SCHOOL**  
1500 W ANDERSON LN  
AUSTIN, TX 78757 - 512.451.6478  
[www.redeemerschool.net](http://www.redeemerschool.net)  
Grade span: PK-8  
Enrollment: 676  
Teachers (FTE): 26.6  
Student/teacher ratio: 25.41  
Religious orientation: Lutheran Church – Missouri Synod  
Tuition: \$3728-\$9,800

**SAINT AUSTIN CATHOLIC SCHOOL**  
1911 SAN ANTONIO ST  
AUSTIN, TX 78705 - 512.477.3751  
[www.staustin.org](http://www.staustin.org)  
Grade span: PK-8  
Enrollment: 221  
Teachers (FTE): 15.6  
Student/teacher ratio: 13.08  
Religious orientation: Roman Catholic  
Tuition: \$6,250-\$6,750

**SAINT FRANCIS SCHOOL**  
300 E HUNTLAND DR  
AUSTIN, TX 78752 - 512.454.0848  
[www.stfrancis-school.org](http://www.stfrancis-school.org)  
Grade span: PK-8  
Enrollment: 360  
Teachers (FTE): 45.4  
Student/teacher ratio: 7.51  
Religious orientation: Nonsectarian  
Tuition: \$156-9,743

**SAINT GABRIEL'S CATHOLIC SCHOOL**  
2500 WIMBERLY LN, AUSTIN, TX 78735  
512.327.7755  
[www.sgs-austin.org](http://www.sgs-austin.org)  
Grade span: PK-8  
Enrollment: 439  
Teachers (FTE): 32.5  
Student/teacher ratio: 12.25  
Religious orientation: Roman Catholic

**SAINT HELEN CATHOLIC SCHOOL**  
2700 E UNIVERSITY AVE  
GEORGETOWN, TX 78626  
512.868.0744  
[www.shcsllions.org](http://www.shcsllions.org)  
Grade span: PK-8  
Enrollment: 193  
Teachers (FTE): 13.5  
Student/teacher ratio: 13.11  
Religious orientation: Roman Catholic

**SAINT IGNATIUS MARTYR SCHOOL**  
120 W OLTORF ST, AUSTIN, TX 78704  
512.442.8547  
[www.st-ignatius.org](http://www.st-ignatius.org)  
Grade span: PK-8  
Enrollment: 255  
Teachers (FTE): 16.9  
Student/teacher ratio: 12.31  
Religious orientation: Roman Catholic

**SAINT LOUIS CATHOLIC SCHOOL**  
2114 SAINT JOSEPH BLVD  
AUSTIN, TX 78757 - 512.454.0384  
www.st-louis.org  
Grade span: PK-8  
Enrollment: 242  
Teachers (FTE): 25.0  
Student/teacher ratio: 9.32  
Religious orientation: Roman Catholic  
Tuition: \$6,360-\$14,321

**SAINT MARY'S CATHOLIC SCHOOL**  
520 WASHBURN ST  
TAYLOR, TX 76574  
512.365.1431  
www.stmarystaylor.org  
Grade span: PK-8  
Enrollment: 146  
Teachers (FTE): 18.6  
Student/teacher ratio: 7.31  
Religious orientation: Roman Catholic

**SAINT PAUL LUTHERAN SCHOOL**  
3407 RED RIVER ST, AUSTIN, TX 78705  
512.472.3313  
www.stpaulaustin.org  
Grade span: PK-8  
Enrollment: 159  
Teachers (FTE): 11.9  
Student/teacher ratio: 8.57  
Religious orientation: Lutheran Church – Missouri Synod

**SAINT PAUL LUTHERAN SCHOOL**  
610 FOWZER ST, TAYLOR, TX 76574  
512.365.6161  
www.stpaultaylorschool.com  
Grade span: PK-7  
Enrollment: 83  
Teachers (FTE): 9.3  
Student/teacher ratio: 7.53  
Religious orientation: Other

**SAINT STEPHEN'S EPISCOPAL SCHOOL**  
6000 FM 3237  
WIMBERLEY, TX 78676  
512.847.9857  
www.ststeveschool.org  
Grade span: PK-5  
Enrollment: 56  
Teachers (FTE): 9.1  
Student/teacher ratio: 4.51  
Religious orientation: Episcopal

**SAINT THERESA'S CATHOLIC SCHOOL**  
4311 SMALL DR, AUSTIN, TX 78731  
512.451.7105  
www.st-theresa.org  
Grade span: PK-8  
Enrollment: 405  
Teachers (FTE): 35.3  
Student/teacher ratio: 10.62  
Religious orientation: Roman Catholic  
Tuition: \$6,310-\$7,448

**SAN MARCOS ADVENTIST JUNIOR ACADEMY**  
1523 RR 12, SAN MARCOS, TX 78666  
512.392.9475  
www.smaja.org  
Grade span: PK-10  
Enrollment: 58  
Teachers (FTE): 6.6  
Student/teacher ratio: 8.18  
Religious orientation: Seventh-Day Adventist

**SANTA CRUZ CATHOLIC SCHOOL**  
1100 MAIN ST., BUDA, TX 78610  
512.312.2137  
www.sccstx.org  
Grade span: PK-8  
Enrollment: 211  
Teachers (FTE): 15.4  
Student/teacher ratio: 11.43  
Religious orientation: Roman Catholic

**SAPIENTIA MONTESSORI SCHOOL**  
1220 COTTONWOOD CREEK TRL  
CEDAR PARK, TX 78613  
512.260.2261  
www.sapientiamontessori.com  
Grade span: PK-6  
Enrollment: 130  
Teachers (FTE): 8.0  
Student/teacher ratio: 6.25  
Religious orientation: Nonsectarian  
School type/program emphasis: Montessori

**STONEHILL CHRISTIAN ACADEMY**  
900 E PECAN ST, SUITE 300  
PFLUGERVILLE, TX 78660  
512.763.2776  
www.stonehillchristianacademy.org  
Grade span: 1-8  
Enrollment: 15  
Teachers (FTE): 1.0  
Student/teacher ratio: 15.00  
Religious orientation: Seventh-Day Adventist

**STRICKLAND CHRISTIAN SCHOOL**  
7415 MANCHACA RD  
AUSTIN, TX 78745 - 512.447.1447  
www.stricklandschool.com  
Grade span: PK-8  
Enrollment: 179  
Religious orientation: Christian (no specific denomination)  
Tuition: \$3,400-\$4,500

**TRINITY EPISCOPAL SCHOOL OF AUSTIN**  
3901 BEE CAVES RD  
WEST LAKE HILLS, TX 78746  
512.472.9525  
www.trinitykids.com  
Grade span: KG-8  
Enrollment: 473  
Teachers (FTE): 50.4  
Student/teacher ratio: 9.38  
Religious orientation: Episcopal  
Tuition: \$18,385-\$19,885

**WIMBERLEY MONTESSORI**  
45 LA BUENA VISTA DR  
WIMBERLEY, TX 78676  
512.847.6055  
www.wimberleymontessori.com  
Grade span: PK-7  
Enrollment: 49  
Teachers (FTE): 6.8  
Student/teacher ratio: 5.29  
Religious orientation: Nonsectarian  
School type/program emphasis: Montessori

**WONDERLAND SCHOOL**  
302 COUNTRY ESTATES DR  
SAN MARCOS, TX 78666 - 512.392.9404  
www.thewonderlandschool.com  
Grade span: PK-6  
Enrollment: 193  
Teachers (FTE): 9.9  
Student/teacher ratio: 9.29  
Religious orientation: Christian (no specific denomination)

**ZION LUTHERAN SCHOOL**  
6101 FM 1105  
GEORGETOWN, TX 78626  
512.865.5345  
www.zionwallburg.org/school/  
Grade span: PK-8  
Enrollment: 178  
Teachers (FTE): 12.8  
Student/teacher ratio: 13.13  
Religious orientation: Lutheran Church – Missouri Synod

## High Schools & Other Schools with Grades Through 12

**ACE ACADEMY**  
3901 SHOAL CREEK BLVD  
AUSTIN, TX 78756 - 512.203.4540  
www.austingifted.org  
Grade span: PK-12  
Enrollment: 150  
Religious orientation: Nonsectarian  
School type/program emphasis: Special Program Emphasis (Gifted)  
Tuition: \$17,000

**AESA PREP ACADEMY** (Academic Excellence for the Scholar, Athlete & Artist)  
13730 W US HWY 290, AUSTIN, TX 78737  
512.560.5584  
www.aesaprepacademy.com  
Grade span: 2-12  
Enrollment: 96  
Religious orientation: Nonsectarian  
School type/program emphasis: Special Program Emphasis

**AUSTIN CHRISTIAN ACADEMY**  
1010 W FM 1626, AUSTIN, TX 78748  
512.292.7848  
www.austinchristianacademy.org  
Grade span: K-12  
Enrollment: 90  
Religious orientation: Christian

**AUSTIN PEACE ACADEMY**  
5110 MANOR RD, AUSTIN, TX 78723  
512.926.1737  
www.apacademy.org  
Grade span: PK-12  
Enrollment: 232  
Teachers (FTE): 19.6  
Student/teacher ratio: 11.38  
Religious orientation: Islamic  
Tuition: \$5,000-\$6,000

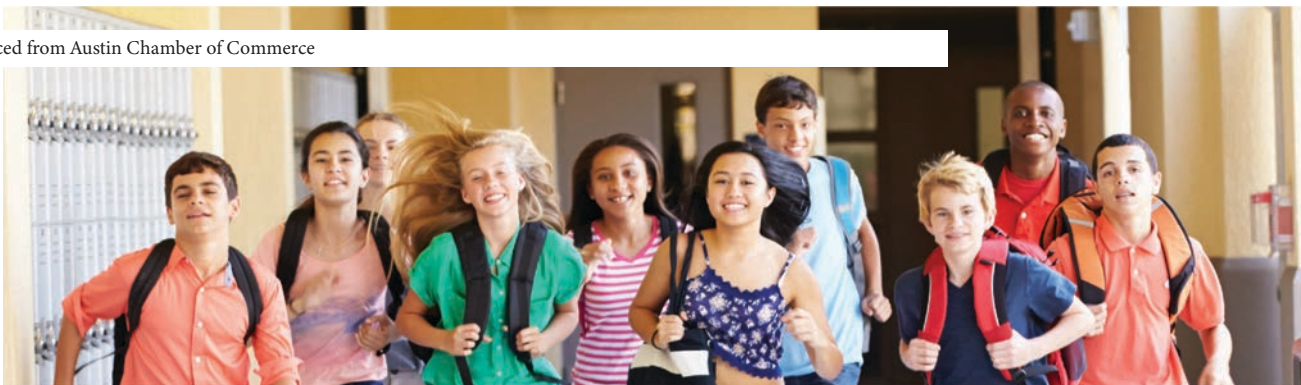
**THE AUSTIN SCHOOL FOR THE PERFORMING & VISUAL ARTS**  
6612 SITIO DEL RIO BLVD  
AUSTIN, TX 78730  
512.522.7782  
www.TheAustinSchool.org  
Grade span: 6-12  
Religious orientation: Nonsectarian  
School type/program emphasis: Special Program Emphasis (Arts)  
Tuition: \$9,000-\$15,500

**AUSTIN TENNIS ACADEMY COLLEGE PREP**  
3801 N CAPITAL OF TEXAS HWY SUITE 3240-161, AUSTIN, TX 78746  
512.423.1105  
www.austintennisacademy.com  
Grade span: 6-12  
Enrollment: 26  
Religious orientation: Nonsectarian

**AUSTIN WALDORF SCHOOL**  
8700 SOUTH VIEW RDAUSTIN, TX 78737  
512.288.5942  
www.austinwaldorf.org  
Grade span: KG-12  
Enrollment: 389  
Teachers (FTE): 43.8  
Student/teacher ratio: 8.88  
Religious orientation: Nonsectarian  
School type/program emphasis: Special  
Tuition: \$11,000-\$16,000

**BRENTWOOD CHRISTIAN SCHOOL**  
11908 N LAMAR BLVD  
AUSTIN, TX 78753  
512.835.5983  
www.brentwoodchristian.org  
Grade span: PK-12  
Enrollment: 757  
Teachers (FTE): 54.0  
Student/teacher ratio: 12.44  
Religious orientation: Church of Christ  
Tuition: \$7,285-\$7,930

Information sourced from Austin Chamber of Commerce



**CONCORDIA HIGH SCHOOL**

1500 ROYSTON LN, SUITE A  
ROUND ROCK, TX 78664  
512.248.2547  
www.concordiaacademy.org  
Grade span: 9-12  
Enrollment: 110  
Teachers (FTE): 10.6  
Student/teacher ratio: 10.38  
Religious orientation: Lutheran Church –  
Missouri Synod

**THE GOSPEL LIGHTHOUSE CHRISTIAN ACADEMY**

2220 S COLORADO ST  
LOCKHART, TX 78644 - 512.376.0005  
www.thegospellighthouse.com  
Grade span: PK-12  
Enrollment: 55  
Teachers (FTE): 7.9  
Student/teacher ratio: 6.71  
Religious orientation: Christian (no specific  
denomination)

**GRACE ACADEMY**

225 GRACE BLVD.  
GEORGETOWN, TX 78633  
512.864.9500  
www.gracetxt.org  
Grade span: KG-12  
Enrollment: 211  
Religious orientation: Christian (no specific  
denomination)  
School type/program emphasis: Special  
Tuition: \$5,935-\$8,635

**THE GRIFFIN SCHOOL**

5001 EVANS AVE, AUSTIN, TX 78751  
512.454.5797  
www.griffinschool.org  
Grade span: 9-12  
Enrollment: 71  
Teachers (FTE): 23.6  
Student/teacher ratio: 3.01  
Religious orientation: Nonsectarian  
School type/program emphasis: Special  
Program Emphasis

**HARBOR CHRISTIAN ACADEMY**

17317 FM 1431, LEANDER, TX 78641  
512.219.5673  
www.harboracademy.org  
Grade span: PK-12  
Enrollment: 50  
Teachers (FTE): 10.1  
Student/teacher ratio: 4.75  
Religious orientation: Christian (no specific  
denomination)  
School type/program emphasis: Special  
Program Emphasis

**HILL COUNTRY CHRISTIAN SCHOOL OF AUSTIN**

12124 RR 620 N., AUSTIN, TX 78750  
512.331.7036  
www.hccsa.com  
Grade span: PK-12  
Enrollment: 612  
Teachers (FTE): 54.9  
Student/teacher ratio: 10.36  
Religious orientation: Christian  
(no specific denomination)  
Tuition: \$2,990-\$12,090

**HILL COUNTRY CHRISTIAN SCHOOL OF SAN MARCOS**

1401 DAVIS LN  
SAN MARCOS, TX 78666  
512.353.8976  
www.hillcountryschool.net  
Grade span: KG-12  
Enrollment: 141  
Teachers (FTE): 14.0  
Student/teacher ratio: 10.07  
Religious orientation: Christian (no specific  
denomination)

**HUNTINGTON-SURREY HIGH SCHOOL**

5206 BALCONES DR., AUSTIN, TX 78731  
512.478.4743  
www.huntingtonsurrey.com  
Grade span: 9-12  
Enrollment: 45  
Teachers (FTE): 10.0  
Student/teacher ratio: 4.50  
Religious orientation: Nonsectarian

**HYDE PARK SCHOOL**

3901 SPEEDWAY ST, AUSTIN, TX 78751  
512.465.8333  
www.hpbs.org  
Grade span: PK-12  
Enrollment: 598  
Teachers (FTE): 60.0  
Student/teacher ratio: 9.82  
Religious orientation: Baptist  
Tuition: \$8,350-\$15,750

**THE KHABELE SCHOOL**

801 RIO GRANDE ST  
AUSTIN, TX 78701 - 512.480.0277  
www.khabele.org/khabeleschool/  
Grade span: PK-12  
Enrollment: 436  
Teachers (FTE): ---  
Student/teacher ratio: 8.74  
Religious orientation: Nonsectarian  
Tuition: \$9,344-\$17,030

**ODYSSEY SCHOOL**

4407 RED RIVER ST, AUSTIN, TX 78751  
512.472.2262  
www.odysseyschool.com  
Grade span: 5-12  
Enrollment: 54  
Teachers (FTE): 14.0  
Student/teacher ratio: 3.86  
Religious orientation: Nonsectarian  
School type/program emphasis: Special  
Education

**REGENTS SCHOOL OF AUSTIN**

3230 TRAVIS COUNTRY CIR  
AUSTIN, TX 78735  
512.899.8095  
www.regentsschool.com  
Grade span: KG-12  
Enrollment: 1,000  
Teachers (FTE): 99.4  
Student/teacher ratio: 10.06  
Religious orientation: Christian (no specific  
denomination)  
Tuition: \$9,775-\$15,600

**RENAISSANCE ACADEMY**

14401 OWEN TECH BLVD  
AUSTIN, TX 78728 - 512.252.2277  
www.racademy.org  
Grade span: PK-12  
Enrollment: 191  
Teachers (FTE): 15.0  
Student/teacher ratio: 9.87  
Religious orientation: Islamic  
Tuition: \$2,000-\$6,450

**ROUND ROCK CHRISTIAN ACADEMY**

301 N LAKE CREEK DR  
ROUND ROCK, TX 78681  
512.255.4491  
www.rrca-tx.org  
Grade span: PK-12  
Enrollment: 537  
Teachers (FTE): 39.8  
Student/teacher ratio: 11.53  
Religious orientation: Christian (no  
specific denomination)  
Tuition: \$6,300-\$8,255

**SAINT ANDREW'S EPISCOPAL SCHOOL**

1112 W 31ST ST, AUSTIN, TX 78705  
512.299.9806  
www.sasaustin.org  
Grade span: 1-12  
Enrollment: 8  
Teachers (FTE): 104.3  
Student/teacher ratio: 8.61  
Religious orientation: Episcopal  
Tuition: \$19,000-\$26,000

**SAINT DOMINIC SAVIO CATHOLIC HIGH SCHOOL**

9300 NEENAH AVE, AUSTIN, TX 78717  
512.388.8846  
www.saviochs.org  
Grade span: 9-12  
Enrollment: 360  
Teachers (FTE): 28.5  
Student/teacher ratio: 12.63  
Religious orientation: Roman Catholic  
Tuition: \$11,200-\$15,200

**SAINT MICHAEL'S CATHOLIC ACADEMY**

3000 BARTON CREEK BLVD  
AUSTIN, TX 78735 - 512.328.2323  
www.smca.com  
Grade span: 9-12  
Religious orientation: Roman Catholic  
Tuition: <\$19,800

**SAINT STEPHEN'S EPISCOPAL SCHOOL**

6500 SAINT STEPHENS DR  
AUSTIN, TX 78746 - 512.327.1213  
www.sstx.org  
Grade span: 6-12  
Enrollment: 684  
Teachers (FTE): 70.1  
Student/teacher ratio: 9.76  
Religious orientation: Episcopal  
Tuition: \$24,400-\$25,990

**SAN JUAN DIEGO CATHOLIC HIGH SCHOOL**

800 HERNDON LN  
AUSTIN, TX 78704  
512.804.1935  
www.sanjuandiegochs.org  
Grade span: 8-12  
Enrollment: 169  
Teachers (FTE): 14.1  
Student/teacher ratio: 11.99  
Religious orientation: Roman Catholic  
School type/program emphasis:  
Alternative/other

**SAN MARCOS ACADEMY**

2801 RR 12  
SAN MARCOS, TX 78666  
512.753.8040  
www.smbears.org  
Grade span: 6-12  
Enrollment: 275  
Religious orientation: Baptist  
Tuition: \$9,900-\$32,500

**SKYBRIDGE ACADEMY**

26450 RR 12  
DRIPPING SPRINGS, TX 78620  
512.484.4976  
www.skybridgetx.com  
Grade span: 8-12  
Enrollment: 67  
School type/program emphasis: Alternative/other  
Tuition: \$11,500-\$12,000

**STERLING CLASSICAL SCHOOL**

11880 OLD 2243 W, BLDG. 7-700  
LEANDER, TX 78641  
512.259.2722  
www.sterlingclassicalschool.com  
Grade span: PK-12  
Enrollment: 300  
Tuition: \$2,500-\$6,000

**SUMMIT CHRISTIAN ACADEMY**

2121 CYPRESS CREEK RD  
CEDAR PARK, TX 78613  
512.250.1369  
www.summiteagles.org  
Grade span: PK-12  
Enrollment: 270  
Teachers (FTE): 36.8  
Student/teacher ratio: 6.52  
Religious orientation: Christian (no specific  
denomination)

**VERITAS ACADEMY**

4220 MONTEREY OAKS BLVD  
AUSTIN, TX 78749  
512.891.1673  
www.veritasacademy.net  
Grade span: PK-12  
Enrollment: 529  
Tuition: \$3,500-\$10,000

<https://www.austinchamber.com/upload/files/ed/austin-private-schools-list.pdf>



# BACK TO SCHOOL

SCHOOL STARTS: \_\_\_\_\_

## checklist

### 2 MONTHS BEFORE:

- ☐ Schedule doctor visits and physicals as needed.
- ☐ Send or bring required forms to the doctor, and renew prescriptions for medications.
- ☐ Sign up your kids for fall sports and after-school activities.

### 6 WEEKS BEFORE:

- ☐ Sort through fall clothing; donate/hand down what no longer fits.
- ☐ Sit down with your planner and write in the entire school calendar. Include sports and other after-school activities.

### 1 MONTH BEFORE:

- ☐ Purchase basic wardrobe necessities, backpacks, lunchboxes, and water bottles for each child.
- ☐ Purchase required school supplies for each classroom.
- ☐ Check progress on summer reading and math packets.

### 3 WEEKS BEFORE:

- ☐ Create an "organization station" in a convenient location by the door. Get one basket or crate for each child to be used for their belongings—books, hat, gloves, sports equipment. Include hooks for backpacks and coats if possible.

### 2 WEEKS BEFORE:

- ☐ Start getting your kids back on their school year bedtime routine.
- ☐ Get your babysitter schedule set up in advance so you have time in your schedule to work out, run errands, have a date night or girls' night out.

### 1 WEEK BEFORE:

- ☐ Schedule haircuts as needed.
- ☐ Make a "favorite foods" list for each of your children. Make sure to note what they like best for lunch, snacks, and dinner so that you'll remember those foods at the grocery store.
- ☐ Stock up on non-perishable basics like juice/milk boxes, napkins, sandwich bags, and snacks.
- ☐ Purchase homework supplies like pencils, markers, crayons and paper.

### 3 DAYS BEFORE:

- ☐ Plan meals for the first week of school.
- ☐ Grocery shopping: Make a list. Include items for your meal plan and from the favorite foods list.
- ☐ Make sure that your camera is fully charged and ready for first day photos.

### THE NIGHT BEFORE:

- ☐ Prepare lunches and snacks for the first day of school.
- ☐ Pack supplies in backpacks.
- ☐ Lay out clothes for first day of school.
- ☐ Set alarm clocks.

### FIRST DAY OF SCHOOL:

Enjoy it! (and don't forget the tissues, or the camera!)